



DELHI PUBLIC SCHOOL
SAIL TOWNSHIP, RANCHI
ANNUAL EXAMINATION (2022-23)

Class - VIII
Time - 3 Hours

Subject - Science
Maximum Marks - 80

Attempt all questions. However there are internal choices. Rough work to be done in the right margin.

PHYSICS

Choose the most appropriate answer. [2 x 1 = 2]

1. A boy rolls a rubber ball on a wooden surface. The ball travels a short distance before coming to rest. To make the same, ball travel longer distance before coming to rest, he may
 - (a) spread a carpet on the wooden surface
 - (b) cover the ball with a piece of cloth
 - (c) sprinkle talcum powder on the wooden surface
 - (d) sprinkle sand on the wooden surface [1]
2. Which of the following can be charged by rubbing/friction?
 - (a) plastic
 - (b) amber
 - (c) ebonite
 - (d) All of these [1]

Very short answer questions. [2x 1 = 2]

3. What kind of lens is there in our eyes? Where does it form the image of an object? [1]
4. The planet Venus is hotter than mercury, though it is farther away from Sun. Why? [1]

Short answer type questions [3 x 2 = 6]

5. What are fault zones? Name the fault zones in India. [2]
6. What are the two factors affecting the force of friction? Name any two types of friction. [2]
7. Which properties of chromium make it useful for electroplating on iron? Why cannot we make the whole article with chromium? [2]

Long answer questions [4x 3 = 12]

8. (a) Give the differences between galaxy and constellation.
(b) Draw the sketch to show the relative positions of prominent stars in Ursa Major constellation [3]

9. (a) We cannot hear the sound of the exploding meteors in the sky, though we can see them. Why?
 (b) A pendulum oscillates 25 times in 5 seconds. Find its time period and frequency. [3]
10. (a) Why is it comfortable to lift a school bag with broad straps than thin straps?
 (b) Why atmospheric pressure is maximum at sea level? [3]
11. (a) State the laws of reflection
 (b) Calculate the number of images formed between two plane mirrors inclined at an angle of 90 degrees. [3]

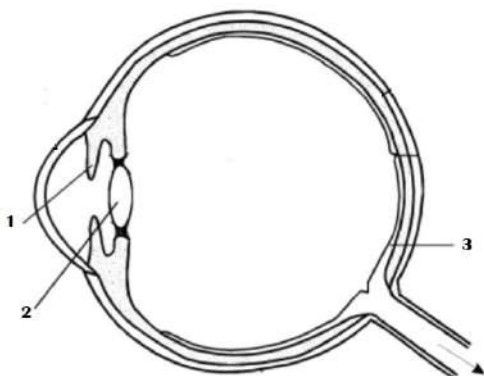
Very long answer questions.

[1x 5 = 5]

12. (a) Describe with the help of a diagram, how an electroscope is used to find the presence of charge on an object.
 (b) Define the terms (1) focus (2) epicentre of an earthquake.

OR

- (a) Sketch the formation of image for a point object by a plane mirror.
 (b) Label and write the function of the parts of the eye shown in the diagram below



CHEMISTRY

SECTION A (5×1=5)

1. Which among the following is the most reactive metal?
 (a) Calcium (b) Copper (c) Iron (d) Magnesium
2. Polycot is obtained by mixing
 (a) Nylon and wool (b) Polyester and wool (c) Nylon and cotton (d) Polyester and cotton
3. Name the gas produced when coal burns in
 (a) Sufficient oxygen
 (b) Insufficient oxygen
4. Name the two chemicals present in the head of a safety match.

5. In an experiment 4.5 kg of a fuel was completely burnt. The heat produced was measured to be 180,000 KJ. Calculate the calorific value of the fuel.

SECTION B (4×2=8)

6. (a) Mention two differences between thermoplastics and thermosetting plastic.
(b) Rohit took with him some nylon ropes, when he was going for rock climbing. Can you give two reasons why he selected nylon ropes instead of ropes made of cotton or jute?
7. (a) Naresh has a Maruti van for picking students which runs on petrol. His daughter asked him to get a CNG kit fitted in it. Do you agree with his daughter's suggestion? Why?
(b) Define exhaustible resources .
8. Manu was heating oil to fry potato chips. The cooking oil all of a sudden caught fire. He poured water to extinguish the fire. Do you think this action was suitable? Explain your answer.
9. (a) Which air pollutant combines with the haemoglobin of your blood and name the compound formed.
(b) At any individual level how can you help reduce air pollution? Explain any two points

SECTION C (3×3=9)

10. (a) Paheli bought a statue made of copper. To her surprise it acquired a dull green coating after a couple of months. Write the chemical equation for the above reaction.
(b) Dinesh is the president of the society. During rainy season, he adds tablets in the water tank of the society so that the residents do not fall ill due to waterborne diseases . Name the non metal which is used in the form of tablets to disinfect water.
(c) Name one soft metal which can be cut with a knife.
11. (a) With the help of an activity show that the innermost zone of the candle flame contains unburnt wax vapours.
(b) Explain two reasons which make LPG a better fuel than wood.
(c) State the difference between the outermost zone and middle zone of a candle flame on the basis of the following
i) Colour ii) Combustion
12. (a) Mention two human activities which lead to an increase in the amount of carbon dioxide in the air.
(b) Name the chemical which damages the Ozone layer when released in air.

SECTION D (1×5=5)

13. (a) Why does the increased level of nutrients in the water affect the survival of aquatic organisms?
(b) Clear and transparent water is not always fit for drinking. Do you agree with the statement? Explain your answer.
(c) Name two diseases caused by drinking contaminated water.

OR

14. (a) Describe the threat to Taj Mahal due to air pollution.
(b) What are the steps taken by Supreme Court to save Taj Mahal?
(c) What is smog?

BIOLOGY

I. Choose the correct option:

[1X2=2]

1. Read the following statements carefully and choose the correct option.

Statement I - The babies born through IVF technique are called test tube babies.

Statement II- In IVF technique, fertilization occurs inside the body.

- (a) Both the statements I and II are true and statement II is the correct explanation of statement I.
(b) Both the statements I and II are true but statement II is not the correct explanation of statement I.
(c) Statement I is true but statement II is false.
(d) Both the statements I and II are false.

2. Read the statements given below.

- (i) Seeds require moisture for germination .
(ii) Plants can absorb nutrients mostly in dissolved form.
(iii) Irrigation protects crops from pests and rodents.

Choose the combination of statements which indicate the need to irrigate crops.

- (a) i and ii
(b) i, ii, iii
(c) i only
(d) i and iii

II. Answer the following questions in one sentence:

[1x2=2]

3. What is Red Data Book?
4. (a) Name the bacterium that converts milk into curd.
(b) Why is yeast used in the wine industry?

III. Answer the following questions briefly:

5. The sample of urine of a person is diagnosed to contain a high content of glucose. The doctor has advised to take insulin injections. [1+1=2]
(a) Identify the disease the person is suffering from and the gland which secretes the hormone 'insulin'.
(b) What is the role of adrenaline hormone that is secreted and released in the blood?
6. (a) Why are protected forests also not completely safe for wild animals?
(Write one point) [1+1=2]
(b) Write one difference between a zoo and a wildlife sanctuary.

7. (a) Sowing the seeds at proper depth is an important aspect to be considered. Comment upon the statement. (Give one point) [1+1=2]
 (b) How can nitrogen be replenished in soil naturally? Explain briefly.
8. (a) Explain briefly the consequence of deforestation on climate. (Write one point) [1+1=2]
 (b) Why are endemic species at a greater risk of extinction than other species?

IV. Answer the following questions as directed:

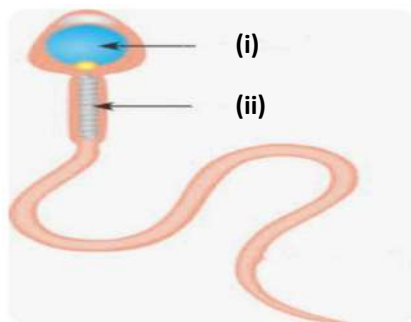
9. (a) What changes are observed in the uterus if fertilization does not occur? [1+1+1=3]
 (Write one point)
 (b) Differentiate between menarche and menopause.
 (c) Tadpoles growing in iodine deficient waters fail to achieve their transformation into frogs. Give a scientific reason.
10. (a) 'Gene is a unit of inheritance in living organisms.' Justify the statement giving a reason.
 (b) A cell requires water, minerals and other nutrients to survive. But the cell is covered by a cell membrane. How do these things reach inside the cell?
 (c) Mention one point of difference between prokaryotic and eukaryotic cells. [1+1+1=3]
11. (a) Give scientific reasons for the following:- [1+1=2]
 (i) Mosquitoes can be controlled by preventing stagnation of water though they do not live in water.
 (ii) Raw vegetables and fruits are kept in refrigerators whereas jams and pickles can be kept outside.
 (b) Complete the table given below related to some common plant and human diseases by filling the blanks (i) and (ii). [1]

(Do not copy the table. Write only the answers)

Disease	Causative agent	Mode of transmission
1) Typhoid	Bacteria	_____ (i) _____
2) Citrus Canker	_____ (ii) _____	Air

V. Answer the following questions in detail:

12. Given below is a diagram showing the structure of human sperm. Study the same and answer the questions that follow. [1+1+1+2=5]



- (a) Label the parts marked as (i) and (ii).
 (b) Name the organ which produces sperms in humans. What is the number of chromosomes present in the nucleus of the sperm?

- (c) Although two cells called gametes fuse, the product formed is a single cell called the zygote. Justify the statement giving one scientific reason.
- (d) Draw a neat diagram showing the female reproductive organs in humans and label the following parts:-
- (i) The organ which produces the female gametes
 - (ii) The part where fertilization occurs
 - (iii) The part where embryo gets embedded

OR

[2+1+2=5]

- (a) Compare the reproduction in hydra and amoeba. (Give two differences)
 - (b) Why do frogs and toads move to ponds/lakes during rainy season?
 - (c) Diagrammatically represent the reproduction in amoeba. (Give two labellings)
-



DELHI PUBLIC SCHOOL
SAIL TOWNSHIP, RANCHI
ANNUAL EXAMINATION (2022-23)

Class: VIII
Time 3 Hours.

Subject : English
Maximum Marks:- 80

General Instructions :

1. The question paper is divided into Three sections, A, B & C.
2. It is compulsory to attempt all the sections.
3. Neatness carries marks.

SECTION – A (READING)

(20 Marks)

I. Read the passage carefully :

1. This afternoon, Amrita Pritam passed away quietly in her sleep at the Hauz Khas residence in New Delhi. And as the news of her demise got out, Punjab rose to mourn her death. Amrita was 86-year old and for the last some years was bedridden.
2. Dalip Kaur Tiwana, one of the leading names in Punjabi literature, could not control her tears and she talked about Amrita Pritam. “I was told about her death by Imroz this afternoon. I got the news over two hours ago and I have been grieving since. My pain is so strong that I cannot even talk. The void Amrita Pritam has left behind her can never be filled.”
3. Amrita Pritam, who has over 78 books to her credit – novels, volumes of verses and miscellaneous prose among them – was born on August 31, 1919, in Punjab, which now falls in Pakistan. She began writing at a tender age of sixteen and was the first woman recipient of the prestigious Sahit Akademi award for the year 1956.
4. She also received the Padma Shree in 1969, Janapeeth in 1982 which was followed by Padma Vibhushan in 2004. She had the distinction of more of her works getting translated into European languages than any other Punjabi writer.
5. She was conferred D. Litt by the Delhi University while Jabalpur University conferred her with the same honour in 1973. Amrita Pritam was also given the International Vaptsarove award by the Republic of Bulgaria (1979) while the Vishwa Bharti, Shantiniketan, awarded her D. Litt (1987). The French Government honoured her with a degree of officer dens/order des arts et des letters in 1987. Among her most admired words are Amrit Lehran, Jinnda Jian, Trel Dhote Phul O! Gitan Valian, Badlaan De Laali, Lok Piar, Patthar Giite, Punjabi Di Aawaaz, Sunehray, Ashoka Cheti, Kasturi, Nagmani, Ik si Anita, Chak Nambar Chatti, Jilavatan, Rasidi Ticket, Uninja Din and Kagaz Te Canvas.
6. Prof Gurdial Singh, an eminent name in the world of Punjabi literature and Janapeeth awardee, says : “Amrita Pritam along with Prof Mohan Singh are a yug

for Punjabi poetry. In present times, though I see many good female poets yet no one has been able to even come near the class of Amrita Pritam.” Dr Gulzar Singh Sandhu, a well known Punjabi short story writer, feels : “In my younger days as I lived in Delhi I shared many moments with this great poetess. She is the one who arranged my marriage. Her death is like an end of an era”.

– The Indian Express

Answer the given questions briefly.

[1x10=10]

- (1) Where was Amrita Pritam staying when she died ?
- (2) At what age did Amrita Pritam pass away ?
- (3) Who uttered these words on Amrita Pritam’s death : “The void Amrita Pritam has left behind can never be filled” ?
- (4) When was Amrita Pritam born ?
- (5) Which award won by the first woman is credited to Amrita Pritam ?
- (6) Find out two eminent names of the Punjabi literature from the passage.
- (7) Who awarded her first D. Litt. ?
- (8) With whom is she equated in literature ?
- (9) The word demise means :-
(a) Funeral (b) disease (c) death (d) birth
- (10) The name of the International award given to Amrita Pritam in 1979 was :-
(a) Republic of Bulgaria (b) Degree of Office
(c) D. Litt (d) Vaptsarove

II. Read the poem carefully and answer the questions that follow :

FRIENDS AND FLATTERERS

Every one that flatters thee
Is no friend in misery
Words are easy, like the wind;
Faithful friends are hard to find.

Everyman will be thy friend
Whilst thou hast wherewith to spend;
But if store of crowns be scant
No man shall supply thy want.

If that one be prodigal
Bountiful they will him call:
And with such life flattering,
'Pity but he were a king'.

But if fortune once do frown
Then farewell his great renown:
They that fawn'd on him before
Use his company no more.

He that is thy friend indeed,

He will help thee in thy need;
If thou sorrow, he will weep;
If thou wake, he cannot sleep:
Thus of every grief in heart
He with thee doth bear a part,
These are certain signs to know
Faithful friend from flattering foe.

Tick the most appropriate option.

[1x4=4]

- (1) Words are compared to the wind
(a) because they are blowing. (b) to make a metaphor.
(c) because like the wind they are lost soon. (d) so that we get confused.
- (2) You will have many friends when you are
(a) popular (b) old (c) young (d) rich
- (3) When you have _____ you will have few friends.
(a) lost your beauty (b) lost your money
(c) lost your job (d) lost your best friend
- (4) We can say that a true friend is a friend
(a) in need. (b) who gives you money.
(c) who shares your sorrows. (d) you can talk to.

Answer these questions.

- (5) What would flatterers say if you are wasteful ? **[1]**
- (6) Identify the figure of speech in the last line of the poem – 'Faithful friend from flattering foe'. **[1]**
- (7) Why is it necessary for you to know the signs of a friend ? **[1]**
- (8) "If thou wake, he cannot sleep" – who is 'he' here ? **[1]**
- (9) What method would you use to identify a true friend ? **[2]**

SECTION – B (WRITING & GRAMMAR)

(35 Marks)

- III. Yesterday you went with your family to dine at a famous restaurant of your city. You were busy having your meal, when all of a sudden you saw M.S. Dhoni sitting next to your table. You couldn't control your emotions. Write a diary entry in 100 – 120 words expressing your feelings. **[5]**

OR

Write a letter to the Mayor of your city in minimum 120 words on the problems related to cleanliness and hygiene of the city. Also suggest a few effective remedies to make the city cleaner and more hygienic for the residents of every nook and corner of the town.

- IV. Develop a story on the basis of the beginning given below in minimum 120 words. Provide a heading and conclude with a thought provoking idea. **[5]**

"Once a lion, the king of the forest, posed a great threat to all other beasts and animals. He killed many animals whenever he was hungry. _____."

V. Change the following into Passive Voice. [1x2=2]

- (1) We have invited all the relatives.
- (2) The police could not find the stolen jewels.

VI. Replace the underlined words with suitable phrases. [1x2=2]

- (1) A marble statue was erected by the family.
- (2) You should learn to speak English fluently.

VII. Following sentences are given in Direct Speech; change these sentences into Indirect Speech. [1x2=2]

- (1) "Water boils when the temperature rises to 100 degree Celsius", the teacher said.
- (2) I said to the boys, "Please listen the instructions carefully".

VIII. Identify the subordinate clauses in the given sentences and state its kind. [1x2=2]

- (1) She wore a necklace which was studded with diamonds.
- (2) I must leave early because my father is waiting for me.

IX. State whether the sentences given below are Compound, Complex or Simple. [1x2=2]

- (1) Diya doesn't know where Piyali has gone.
- (2) It is dark outside and my brother has gone to the market.

X. Do as directed : [1x12=12]

- (1) The animals at the zoo were disturbed by the loud noise. (Identify Predicate)
- (2) A generous prince of Kingston is loved by everyone. (Identify Subject)
- (3) I left my luggage _____ (on / at) the station. (Choose the correct Preposition)
- (4) Ravi had visited Delhi last year with me. (Identify the Direct Object)
- (5) Kiran came to my house yesterday. (Identify the Tense)
- (6) Arudhanti writes books on environment. (Change the sentence into Simple Past)
- (7) My mother waters plants everyday. (Find out object)
- (8) He forgets eating his lunch. (Re-write the sentence using to + infinitive)
- (9) He walked continuously for two hours. (Identify whether the underlined word is Preposition or Conjunction)
- (10) Swimming is my favourite sport. (State whether the underlined word is Gerund or Participle)
- (11) This sum is very difficult. I can not solve it. (Join the sentences to make one simple sentence)
- (12) I wish to go to America. My visa has not come. (Make compound sentence)

- XI. There is one error in each line of this passage. Pick up the error and write in column A and write the correct word in the space of column B. [1x3=3]**

		Column A	Column B
Floods is a common natural disaster.	(1)	_____	_____
Scientists has often tried to predict floods.	(2)	_____	_____
There is a number of reasons that cause floods.	(3)	_____	_____

SECTION – C (LITERATURE)

(25 Marks)

- XII. Answer the given questions with reference to the context. [1x8=8]**

A) “She was an interesting girl can you tell me – did she keep her hair long or short ?”

- (1) Who did the speaker ask this question to ?
- (2) Why did the speaker ask this question ?
- (3) What happened immediately after this ?
- (4) Do you think that it is the most important part of the story ? Explain why ?

**B) “He plants the glory of the plain
He plants the forest’s heritage”**

- (1) What two things does a tree planter actually plant ?
- (2) How does planting a tree bring us physical comfort ?
- (3) Why does the speaker call the tree a link between us and our children ?
- (4) What does heritage refer to in the given lines ?

- XIII. Answer any five questions in 30 to 40 words : [2x5=10]**

- (1) What was special about kite flying in Afghanistan ?
- (2) How did the soldiers respond to the orders given by their commander in the poem “The Charge of the Light Brigade” ?
- (3) How would the captain spend his time after the stroke ?
- (4) Why is the speaker scared in the poem Gravity ?
- (5) Explain “the treble of heaven’s harmony”.
- (6) What instructions did the girl’s parents give her and why ?

- XIV. Answer any one question in 80 to 100 words : [5]**

- (1) It often happens that people with good eyesight fail to see what is right in front of them. Do you agree with the above statement ? Give reasons for your answer.
- (2) If there were no gravity on Earth, what would have happened ?

- XV. Vocabulary : [1x2=2]**

- (1) Write the synonym of Feasibility.
- (2) Students preparing for competitive exams must _____ of the current affairs.
 - (a) think on your feet
 - (b) get the show on the road
 - (c) keep fingers on the pulse



DELHI PUBLIC SCHOOL

SAIL TOWNSHIP, RANCHI

ANNUAL EXAMINATION (2022-23)

Class - VIII
Time - 3 Hours

Subject - Mathematics
Maximum Marks- 80

General Instructions:

1. This question paper has 5 Section A-E.
2. Section A has 20 MCQs carrying 1 mark each.
3. Section B has 5 questions carrying 2 marks each.
4. Section C has 6 questions carrying 3 marks each.
5. Section D has 4 questions carrying 5 marks each.
6. Section E has 3 case based integrated units of assessment (04 marks each) with subparts of the values 1,1 and 2 marks each respectively.
7. All questions are compulsory. However, an internal choice in 2 questions of 5marks,2 questions of 3 marks and 2 questions of 2 marks has been provided. An internal choice has been provided in the 2marks questions of Section E.
8. Draw neat figures wherever required .Take $\Pi = \frac{22}{7}$ wherever required if not stated.

SECTION –A

1. The numbersand are their own reciprocal.
a) 1, - 1
b) 1, 0
c) - 1, 0
d) none of these
2. What is the value of x in the equation $\frac{2}{5x} - \frac{5}{3x} = \frac{1}{15}$
a) -19
b) 5
c) 20
d) 6
3. Find 'a' if $\frac{a-8}{3} = \frac{a-3}{2}$
a) -7
b) -9
c) 15
d) 11
4. Two adjacent angles of a parallelogram are equal, the measure of each angle is
a) 90°
b) 180°
c) 120°
d) None of these
5. Sum of the exterior angle of a regular pentagon is
a) 540°
b) 360°
c) 180°
d) None of these
6. The probability that it will rain tomorrow is 0.75. What is the probability that it will not rain tomorrow
a) 0.35
b) 0.25
c) 0.95
d) None of these

7. What is the size of the class interval 300- 325?
 a) 50 b) 60 c) 25 d) 70
8. What is the value of 5^{th} triangular number ?
 a) 10 b) 6 c) 15 d) None of these
9. One member of the Pythagorean triplet is 6, what are the other two members?
 a) [8, 10] b) [5,3] c) [7,8] d) None of these
10. What is the value of cube root of 1.331?
 a) 1.11 b) 1.1 c) 1.01 d) None of these
11. Among all of these which one is Hardy Ramanujan number ?
 a) 4104 b) 5164 c) 2315 d) None of these
12. A person sells an article for Rs 550 gaining $\frac{1}{10}$ of its CP .What is the gain percent ?
 a) 20% b) 10 % c) 5% d) None of these
13. How many faces of a polyhedron having 12 edges and 8 vertices?
 a) 9 b) 6 c) 15 d) 20
14. A symbol having fixed numerical value is called a
 a) Variable b) Constant c) Coefficient d) None of these
15. $1 \text{ K l} = \dots\dots\dots m^3$
 a) 1000 b) 100 c) 10 d) 1
16. How many 3 metre cubes can be cut from a cuboid measuring $18m \times 12m \times 9m$?
 a) 36 b) 72 c) 18 d) None of these
17. What is the value of $\frac{8^{-1} \times 5^3}{2^{-4}}$?
 a) 125 b) 200 c) 250 d) None of these
18. Sohan type 360 words during half an hour. How many words would he type in 6 mins ?
 a) 72 b) 108 c) 54 d) None of these
19. Two factors of the expression $a^2 + 3a - 88$ are
 a) $(a-11)(a-8)$ b) $(a+11)(a - 8)$
 c) $(a+9)(a+2)$ d) None of these
20. What is the remainder when 379843 is divided by 3
 a) 1 b) 2 c) 3 d) none of these

SECTION -B

21. What should be added to $\frac{-5}{8}$ so as to get $\frac{5}{9}$?

OR

By what number should we multiply $\frac{2}{-14}$, so that the product may be $\frac{5}{12}$?

22. Find the smallest whole number by which 7688 must be multiplied so as to get a perfect square number .

23. If the cost price of 18 mangoes is the same as the selling price of 16 mangoes, find the gain percent .

OR

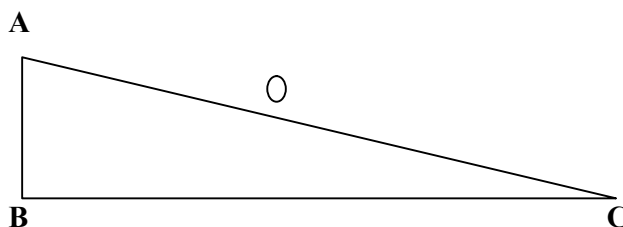
After allowing a discount of 12% on the marked price of an article, It is sold for Rs880. Find its marked price.

24. Draw diagram of a Tetrahedron . Write the number of Faces, Vertices and Edges.

25. If x is a digit of the number 67y19 is divisible by 9, where y is a digit .
What are the possible value of y ?

SECTION -C

26. ABC is a right –angled triangle and ‘O’ is the mid point of the side opposite to the right angle. Explain why ‘O’ is equidistant from A, B and C.



27. Construct a quadrilaterals ABCD where AB = 3.5cm ,BC = 6.5cm,

$$\angle A = 75^\circ, \angle B = 105^\circ \text{ and } \angle C = 120^\circ.$$

28. What is the smallest number by which 8192 must be divided so that quotient is a perfect cube? Also, find the cube root of the quotient so obtained .

OR

Evaluate $\sqrt[3]{\frac{0.027}{0.008}} \div \sqrt{\frac{0.09}{0.04}} - 1$

29. (a) By what number should $(7)^{-1}$ be multiplied so that the product may be equal to $(-5)^{-1}$?
(b) Write 0.00000374 in standard form.

30. There are 1200 soldiers in a fort that had enough food for 20 days. But some soldiers were transferred to another fort and the food lasted for 25 days. How many soldiers were transferred?

OR

A school has 8 periods a day each of 45 minutes duration. How long would each period be, if the school has 9 periods a day, assuming the number of school hours to be the same?

31. Plot each of the following points A(2,3),B(5,3),C(5,5)and D(2,5) on a graph sheet. Also find the area of the quadrilateral ABCD formed.

SECTION –D

32. An altitude of triangle is five-thirds the length of its corresponding base. If the altitude were increased by 4cm and the base be decreased by 2cm, the area of the triangle would remain the same. Find the base and the altitude of the triangle.

OR

There are 100 multiple choice question in a test , suppose you get 2 marks for every correct answer and for every question you leave unattempted or answer wrongly, one mark is deducted from your total score of correct answers. If you get 80 marks in the test then how many questions did you answer correctly?

33. Mohan invested Rs 50,000 at an interest rate of 10% per annum compounded half yearly. What amount would he get
i) After 6 months?
ii) After 1 year ?

34. (a) If $a^2 + b^2 + c^2 - ab - bc - ca = 0$ prove that $a = b = c$

(b) If $4x^2 + y^2 = 40$ and $xy = 6$ find the value of $2x + y$

OR

(a) Simplify $\frac{58^2 - 42^2}{16}$

(b) If $x^2 + y^2 = 29$ and $xy = 2$ find the value of $x - y$.

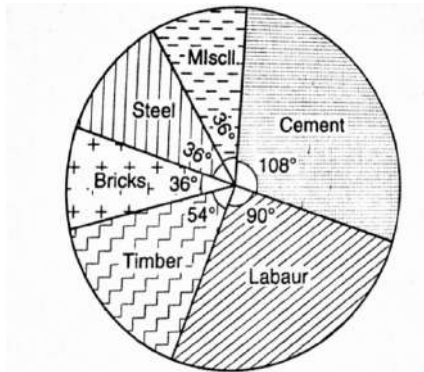
35. Factorize

(a) $(2x + 3y)^2 - 5(2x + 3y) - 14$

(b) $a^2 - 8ab + 16b^2 - 25c^2$

SECTION-E

36. Reshma has bought a new plot .She wishes to construct a house in that area. She draws required proportions of the following items such as Concrete, Bricks, Timber , Labour cost etc in a pie chart representing their specific angles. From the given pie chart help her to find the expenditure.



- i) What percentage of total expenditure is spent on labour ?
- ii) What percentage of total expense is spent on bricks and steel ?
- iii) If the total expenditure is estimated to be Rs. 11,00,000 , then how much money was spent on timber?

OR

If the total expenditure is estimated to be Rs. 11,00,000 , then how much money was spent on Labour?

37. In the city of Jabalpur , water is supplied by municipal corporation in the city is done through pipes . Iron pipes are of length 20 cm each with exterior diameter as 25 cm. The thickness of each pipe is 1 cm . From the above situation find the following for the renovation of the city.

- i) Find the internal surface area of the pipe.
- ii) Find the external surface area of the pipe .
- iii) Find the total surface area of the pipe.

OR

Find the volume of the water inside the pipe.

38. Vinay is a manager in a bank . He looks after the deposits done by people. He has the task to calculate the simple interests on the deposited money for year by different people . The table below shows the following – [2+1+1]

Deposit (in Rs.)	500	1000	1500	2000	2500	3000
Simple Interest(in Rs)	60	120	180	240	300	360

- i) Draw a linear graph for the above data.
- OR**
- i) Draw bar graph for the above data.
 - ii) From the above graph , find the interest on Rs. 1750 for a year .
 - iii) How much money should be deposited to get an interest of Rs. 90 ?



DELHI PUBLIC SCHOOL

SAIL TOWNSHIP, RANCHI

ANNUAL EXAMINATION (2022-23)

Class - VIII
Time - 3 Hours

Subject - Hindi
Maximum Marks- 80

- निर्देश – (i) प्रश्नों की कुल संख्या – 1 से 6 है।
(ii) प्रश्न दो भाग में है – खण्ड 'क' तथा खण्ड 'ख'
(iii) सभी प्रश्न अनिवार्य हैं।
(iv) यथासंभव सभी प्रश्नों के उत्तर क्रमशः लिखे।

खण्ड 'क'

प्रश्न (1) निम्नलिखित अपठित गद्यांश को ध्यानपूर्वक पढ़ें तथा दिए गए प्रश्नों के उचित उत्तर चुनकर लिखें –

(क) प्रेमचंद पवित्र उद्देश्य को पाने के लिए साधनों की पवित्रता में विश्वास करते थे। इनकी रचनाओं के प्रमुख पात्र इसी आदर्श को मानने वाले होते थे। उन्होंने ग्रामीण जीवन को बड़े निकट से देखा था। इसी कारण उनकी रचनाओं में ग्राम्य जीवन साकार हो उठा। प्रेमचंद ने अपनी रचनाओं में निम्न वर्ग और मध्यम वर्ग का चित्रण अधिक किया है। 'गोदान' उपन्यास पढ़ने से ऐसा प्रतीत होता है, जैसे ये घटनाएँ हमारे आस-पास ही घटित हो रही हैं।

प्रेमचंद के साहित्य में सामाजिक समस्याओं का सुंदर चित्रण मिलता है। इन्होंने अपनी रचनाओं में मनोरंजन के अतिरिक्त देश, समाज और परिवार की ज्वलंत समस्याओं को हमारे सामने रखा है। उनके उपन्यासों का केंद्र सामाजिक जीवन ही है।

(1X5=5)

(i) प्रेमचंद ने अपनी रचनाओं में किस वर्ग का चित्रण अधिक किया है?

(क) मध्यम वर्ग का (ख) उच्च वर्ग का (ग) निम्न और मध्यम वर्ग का (घ) शिक्षित वर्ग का

(ii) प्रेमचंद के उपन्यासों का केंद्र क्या है?

(क) राजनीतिक जीवन (ख) पारिवारिक जीवन (ग) सामाजिक जीवन (घ) विदेशी जीवन

(iii) प्रेमचंद द्वारा रचित उपन्यास निम्नलिखित में से कौन सा है?

(क) गोरा (ख) गोदान (ग) मैला आँचल (घ) तमस

(iv) प्रेमचंद ने किस प्रकार के जीवन को निकट से देखा था?

(क) शहरी जीवन को (ख) ग्राम्य जीवन को (ग) विदेशी जीवन को (घ) राजनीतिक जीवन को

(v) प्रेमचंद साधनों की पवित्रता में क्यों विश्वास करते थे?

(क) शिक्षा प्राप्त करने के लिए (ख) पवित्र उद्देश्य को पाने के लिए
(ग) गरीबी की समस्या दूर करने के लिए (घ) रोजगार पाने के लिए

(ख) संसार का हर धर्म दया और करुणा को सर्वोच्च महत्त्व देता है। बुद्ध ने समूची जनता को करुणा का संदेश दिया। जैन धर्म दया को 'अहिंसा' के नाम से पुकारता है तो ईसाई धर्म – 'क्षमा और सेवा' के नाम से। प्रकृति हमें परोपकार की शिक्षा देती है। सूर्य हमें प्रकाश देता है, चंद्रमा अपनी चाँदनी छिटकाकर शीतलता प्रदान करता है। भारत अपनी परोपकारी परंपरा के लिए जगत प्रसिद्ध रहा है। परोपकार करने से आत्मा को

सच्चे आनंद की प्राप्ति होती है। दूसरे के कल्याण से आत्मा विस्तृत हो जाती है। अतः जीवन को समाज हित में लगाने के लिए हमें 'दया' का पवित्र भाव मन में जगाना चाहिए।

(1X5=5)

(i) संसार के प्रत्येक धर्मों ने किसे महत्त्व दिया है?

(क) दया और करुणा को (ख) सम्पन्नता को (ग) स्वावलंबन को (घ) आत्मज्ञान को

(ii) जैन धर्म दया को किस नाम से पुकारता है?

(क) अहिंसा (ख) हिंसा (ग) परोपकार (घ) मित्रता

(iii) सूर्य हमें प्रकाश देता है – यह उसके किस भाव को दर्शाता है?

(क) परोपकार (ख) अपनापन (ग) सहिष्णुता (घ) हिंसा

(iv) परोपकार करने से निम्नलिखित में से कौन सा लाभ नहीं मिलता है?

(क) सच्चे आनंद की (ख) आत्मा विस्तृत हो जाती है
(ग) अलौकिक आनंद की प्राप्ति होती है। (घ) आत्मा अशांत हो जाती है।

(v) जीवन को समाज हित में लगाने के लिए हमें कौन सा भाव मन में जगाना चाहिए?

(क) अहंकार (ख) ईर्ष्या (ग) हिंसा (घ) दया

प्रश्न (2) व्याकरण पर आधारित निम्नलिखित प्रश्नों के उचित उत्तर चुनें :-

(1X20=20)

(i) अपने भावों और विचारों की अभिव्यक्ति के लिए क्या आवश्यक है?

(क) भाषा (ख) शिक्षा (ग) व्याकरण (घ) पुस्तक

(ii) निम्नलिखित में से हवा किसके उच्चारण में केवल नाक से निकलती है?

(क) अनुस्वार के (ख) अनुनासिक के (ग) नुक्ता के (घ) स्वर के

(iii) निम्नलिखित शब्दों में कौन – सा शब्द 'आकाश' का पर्यायवाची शब्द नहीं है?

(क) अंबर (ख) व्योम (ग) वसन (घ) गगन

(iv) 'अनिवार्य' का विलोम शब्द चुनें :-

(क) अनावश्यक (ख) आवश्यक (ग) ऐच्छिक (घ) इच्छुक

(v) निम्नलिखित अनेक शब्दों के लिए एक शब्द बताएँ –

जो आत्मा से संबंधित हो

(क) आत्मनिर्भर (ख) अभियुक्त (ग) आत्मिक (घ) आत्मविश्वासी

(vi) हमें ----- समय पर विद्यालय जाना चाहिए।

निम्नलिखित समरूपी भिन्नार्थक शब्दों में से उचित शब्द चुनकर रिक्त स्थान भरें :-

(क) नियत (ख) नीयत (ग) निर्यात (घ) नियति

(vii) निम्नलिखित शब्दों में से वह शब्द चुनें जिसमें उपसर्ग एवं प्रत्यय दोनों प्रयुक्त हों –

(क) अपमानित (ख) आवश्यकता (ग) लिखाई (घ) अभिशाप

(viii) निम्नलिखित वाक्य में कर्म के आधार पर क्रिया के भेद बताएँ –

गाय हरी-हरी घास खा रही है।

(क) सकर्मक (ख) अकर्मक (ग) द्विकर्मक (घ) प्रेरणार्थक

- (ix) अकर्मक क्रिया में क्रिया का फल किस पर पड़ता है?
 (क) कर्म पर (ख) कर्ता पर (ग) क्रिया पर (घ) वाक्य पर
- (x) बच्चे गेंद से खेल रहे हैं।
 उपर्युक्त वाक्य में कौन – सा शब्द कर्म है?
 (क) गेंद (ख) बच्चे (ग) खेल (घ) कोई नहीं
- (xi) हरी शाक-सब्जी अधिक खाना चाहिए।
 रेखांकित शब्द क्रिया विशेषण के कौन से भेद के अंतर्गत आता है?
 (क) स्थानवाचक (ख) परिमाणवाचक (ग) रीतिवाचक (घ) कालवाचक
- (xii) क्रिया विशेषण शब्द किसकी विशेषता बताते हैं?
 (क) वाक्य की (ख) संज्ञा शब्द की (ग) क्रिया की (घ) विशेषण की
- (xiii) दिए गए विराम चिह्न का नाम बताएँ –
 " " " " " "
 (क) विवरण चिह्न (ख) उद्धरण चिह्न (ग) विस्मरण चिह्न (घ) हंसपद चिह्न
- (xiv) कोमल सी बच्ची डॉक्टर बनना चाहती है
 उपर्युक्त वाक्य में कौन-कौन से विराम चिह्नों का प्रयोग होगा?
 (क) () ! (ख) , । (ग) - । (घ) - ?
- (xv) निम्नलिखित मुहावरे के अर्थ लिखें –
 एक आँख से देखना
 (क) बदल जाना (ख) सबको समान रूप से देखना
 (ग) बहुत क्रोधित होना (घ) डरकर भागना
- (xvi) निम्नलिखित अर्थ के लिए उचित मुहावरे बताएँ –
 विरोध करना
 (क) छाती साँप लोटना (ख) गर्दन उठाना (ग) उँगली उठाना (घ) कलम तोड़ना
- (xvii) परीक्षा में अच्छे अंक प्राप्त करने के लिए मोनू ने ----- ।
 उचित मुहावरे चुन कर वाक्य पूरा करें –
 (क) खून पसीना एक कर दिया (ख) गीदड़ भभकी दिया
 (ग) घुटने टेक दिया (घ) गर्दन उठा दिया
- (xviii) निम्नलिखित में से कौन-सा जोड़ा स्त्रीलिंग शब्द नहीं है?
 (क) मोती, नीम (ख) गंगा, हथेली (ग) रोटी, खीर (घ) मछली, लोमड़ी
- (xix) 'बुद्धिमान' शब्द का स्त्रीलिंग शब्द लिखें –
 (क) बुद्धिमती (ख) बुद्धिमानी (ग) बुद्धिवती (घ) बुद्धिहीन
- (xx) निम्नलिखित एकार्थक शब्दों में से उचित शब्द चुनकर रिक्त स्थान भरें –
 महात्मा गाँधी के प्रति लोगों में अपार ---- है।
 (क) कृपा (ख) दया (ग) भक्ति (घ) श्रद्धा

प्रश्न (3) निम्नलिखित अपठित गद्यांश को पढ़ें तथा दिए गए प्रश्नों के उत्तर लिखें –

(क) अब सब लोग नल पर टूट पड़े। यहाँ भी वह घमासान मची कि क्या मजाल जो एक बूँद पानी भी किसी के बर्तन में आ सके। ठूसम-ठास! किसी बालटी पर पतीला और पतीले पर लोटा और भगोने और डोंगे। पहले तो धक्के चले। फिर कुहनियों और उसके बाद बरतन। फौरन बड़े भाइयों, बहनों, मामुओं और दमदार मौसियों, फूफियों की कुमक भेजी गई, फौज मैदान में हथियार फेंककर पीठ दिखा गई।

इस धींगामुश्ती में कुछ बच्चे कीचड़ में लथपथ हो गए, जिन्हें नहलाकर, कपड़े बदलवाने के लिए नौकरों की वर्तमान संख्या काफी नहीं थी। पास के बंगलों से नौकर आए और चार आना प्रति बच्चा के हिसाब से नहलवाए गए।

(1X5=5)

(i) बच्चों को नहलवाने में प्रति बच्चा कितना खर्च आया?

(क) 75 पैसे (ख) 20 पैसे (ग) 50 पैसे (घ) 25 पैसे

(ii) धींगा मुश्ती में बच्चों का क्या हाल हुआ?

(क) वे कीचड़ से गंदे हो गए (ख) वे पानी से भीग गये
(ग) उन्हें चोट लग गई (घ) वे गिर पड़े

(iii) बच्चों को नहलाने के लिए नौकर को क्यों बुलाना पड़ा?

(क) बच्चों के हिसाब से नौकरों की संख्या कम थी (ख) नौकर भाग गये थे।
(ग) घर के सदस्य काम नहीं करना चाहते थे। (घ) बच्चे बहुत शरारती थे।

(iv) नौकरों को कहाँ से बुलाया गया?

(क) दूर के मोहल्ले से (ख) पास के बंगलों से
(ग) मौसी के घर से (घ) पास की झोपड़ी से

(v) प्रस्तुत गद्यांश के लेखक कौन हैं?

(क) हरिशंकर परसाई (ख) इस्मत चुगताई (ग) हजारी प्रसाद द्विवेदी (घ) प्रदीप तिवारी

(ख) दुपहर दिवस जानि घर सूनों ढूँढ़ि-ढँढोरि आपही आयौ।
खोलि किवारि, पैठि मंदिर मैं, दूध-दही सब सखानि खवायौ।
ओखल चढ़ि, सींके कौ लीन्हों, अनभावत भुईं मैं ढरकायौ।
दिन प्रति हानि होति गोरस की, यह ढोटा कौनै ढँग लायौ।

(1X5=5)

(i) कृष्ण अपने मित्रों को क्या खिलाते थे?

(क) मलाई, जलेबी (ख) माखन, लड्डू (ग) दूध, मलाई (घ) दूध, दही

(ii) छींके तक पहुँचने के लिए कृष्ण किसका सहारा लेते थे?

(क) सीढ़ी का (ख) रस्सी का (ग) बोरा का (घ) ओखल का

(iii) ग्वालनों को प्रतिदिन किस चीज की हानि हो रही थी?

(क) दूध से बनी चीजों की (ख) मिठाइयों की (ग) पकवान की (घ) अनाज की

(iv) कृष्ण ग्वालनों के घर दिन में किस समय जाते थे?

(क) प्रातः काल (ख) दोपहर के समय
(ग) शाम के समय (घ) आधी रात को

(v) उपर्युक्त पंक्तियों के कवि का नाम बताएँ :-

(क) नरोत्तमदास (ख) सूरदास (ग) कबीरदास (घ) तुलसीदास

खण्ड 'ख'

प्रश्न (4) (i) निम्नलिखित प्रश्नों के अति संक्षिप्त उत्तर लिखें –

(1X4=4)

- (क) कवि को ऐसा विश्वास क्यों है कि उसका अंत अभी नहीं होगा?
(ख) कवि ने पक्षी और बादल को भगवान के डाकिए क्यों बताया है?
(ग) पत्र जैसा संतोष फोन या एस.एम.एस. नहीं दे सकता। इसके कोई दो कारण बताएँ।
(घ) 'चिट्ठियों की अनूठी दुनिया' नामक पाठ साहित्य की कौन सी विधा है?

(ii) निम्नलिखित प्रश्नों के संक्षिप्त उत्तर लिखें –

(2X5=10)

- (क) पहली बार बस क्यों रूक गई थी? कारण पता चलने पर ड्राइवर ने समस्या का हल कैसे निकाला?
(ख) 'आलम आरा' फिल्म कब और पहली बार कहाँ प्रदर्शित हुई थी?
(ग) सुदामा के वेश भूषा का वर्णन 'सुदामा चरित' नामक पाठ के आधार पर करें।
(घ) भाव स्पष्ट करें –
जग में बैरी कोई नहीं, जो मन सीतल होय।
या आपा को डारि दे, दया करै सब कोय॥
(ङ) साइकिल को महिलाओं ने आजादी का प्रतीक क्यों माना?

(iii) निम्नलिखित प्रश्नों के उत्तर लिखें –

(3X2=6)

- (क) बदलू कौन था? मशीनी युग से उसके जीवन में क्या बदलाव आया?
(ख) 'बस की यात्रा' नाम पाठ में बस को लेखक ने वृद्धा के समान क्यों बताया है? लोगों ने लेखक को क्या सलाह दी?

प्रश्न (5) 'मधुकलश' पर आधारित किन्हीं पाँच प्रश्नों के उत्तर लिखें –

(2X5=10)

- (क) बहू के आने से लकड़हारे के जीवन में खुशहाली आ गई। कैसे?
(ख) प्रेमचंद को गाँव में ही रहना क्यों पसंद था?
(ग) 'समय' पाठ से हमें क्या शिक्षा मिलती है?
(घ) लेखक को किस विषय के लिए पुरस्कार मिला था? अमेरिका में लेखक ने हिन्दी के प्रचार प्रसार के लिए क्या कार्य किए?
(ङ) राजकुमार जंगल में क्यों गया था? संन्यासी ने उसे क्या शिक्षा दी?
(च) मतिलदा ने पार्टी में जाने के लिए क्या-क्या तैयारी की?
(छ) 'पानी और पुल' नामक पाठ में किस समस्या को दर्शाया गया है? सराई स्टेशन पर लोग लेखक की माता से क्या आग्रह कर रहे थे?
(ज) भिखारी ने बच्चे के पैरों में बेड़ी क्यों डाल दी थी?

प्रश्न (6)(i) निम्नलिखित विषयों में से किसी एक विषय पर 100 से 150 शब्दों में अनुच्छेद लिखें।

(5)

- (क) व्यायाम का महत्त्व
संकेत बिन्दु
- भूमिका
 - प्रकार/तरीका
 - महत्त्व
 - निष्कर्ष

(ख) शहरीकरण और पर्यावरण

- संकेत बिन्दु
- भूमिका
 - प्रभाव/हानि
 - निष्कर्ष

(ग) समय का सदुपयोग

- संकेत बिन्दु
- भूमिका
 - महत्त्व
 - सदुपयोग न करने के दुष्प्रभाव
 - निष्कर्ष

(ii) छोटे भाई को मोबाइल का प्रयोग कम करने की सलाह देते हुए पत्र लिखें।

(5)

या

वर्ग कक्ष में लगे स्मार्ट बोर्ड के उचित रख – रखाव हेतु प्रचार्य को पत्र लिखें।



DELHI PUBLIC SCHOOL

SAIL TOWNSHIP, RANCHI

ANNUAL EXAMINATION (2022-23)

Class - VIII
Time - 3 Hours

Subject - Social Science
Maximum Marks - 80

General Instructions:

- i. All questions are compulsory
 - ii. There is no overall choice in the question paper. However, an internal choice has been provided in few questions. Only one of the choices in such questions have to be attempted.
-

HISTORY

I. Choose the correct option.

[1x7=7]

1. Who was Warren Hastings ?
 - A. First Viceroy of India
 - B. Former Governor General of India
 - C. Former Prime Minister of United Kingdom
 - D. None of the above
2. What was farman ?
 - A. A trading ship
 - B. An East India Factory
 - C. A royal edict to trade duty free
 - D. Name of faujdari adalat situated in Bengal
3. _____ is a unit of measurement of land.
 - A. Litre
 - B. Bigha
 - C. Kilogram
 - D. millilitre
4. _____ was the last Mughal ruler.
 - A. Aurangzeb
 - B. Bahadur Shah Zafar
 - C. Ahmad Shah Bahadur
 - D. Mahmud Shah Bahadur

5. Match the following

COLUMN A	COLUMN B
(i) Linguist	(a) A person who can read, write and teach Persian
(ii) Orientalists	(b) A local language
(iii) Munshi	(c) A place of learning
(iv) Vernacular	(d) An order brought from England to India by Wood
(v) Wood's Despatch	(e) A person who knows and studies several languages.
(vi) Pathshalas	(f) People who have scholarly knowledge of the language and culture of Asia.

OPTIONS

- A. (i)-e , (ii)-f, (iii)-a, (iv)-b, (v)-d, (vi)-c
- B. (i)-e , (ii)-f, (iii)-a, (iv) c , (v)-d, (vi)-b
- C. (ii)-d , (i)-f, (iii)-b, (iv) c, (v)-e, (vi)-a
- D. (iii)-c, (i)-f, (iii)-d, (iv) b, (v)-d, (vi)-a

6. His support for women upliftment made him mark for the passing of the Widow Remarriage Act 1856. Who is being referred to here ?

- A. Keshab Chandra Sen
- B. Bankim Chandra Chatterjee
- C. Ishwar Chandra Vidyasagar
- D. Dada Bhai Naoroji

7. Bengal was divided by the British in the year

- A. 1900
- B. 1905
- C. 1910
- D. 1915

II. Answer the following :

[2x3=6]

1. What were the areas of conflict between the Bengal Nawabs and the East India Company ?
2. List any two changes introduced in the administrative set up of the British territories in India as a result of the rebellion of 1857.
3. Write about any two remarks given by William Adam in his report on vernacular education in India.

III. Answer the following questions :

[3x2=6]

1. Describe the main features of the Permanent Settlement.
2. Why were people dissatisfied with the British rule in the 1870s and 1880s ?

IV. Answer the following questions in detail.

[5]

Why was Bengal divided? Explain its consequences.

(2+3=5)

OR

Who were the Moderates? How did they propose to struggle against British rule? **(2+3=5)**

V. Read the paragraph given and answer the following questions :

[4]

Girls begin going to school

Many of the reformers felt that education for girls was necessary in order to improve the condition of women.

Vidyasagar in Calcutta and many other reformers in Bombay set up schools for girls. When the first schools were opened in the mid-nineteenth century, many people were afraid of them. Therefore, throughout the nineteenth century, most educated women were taught at home by liberal fathers or husbands. Sometimes women taught themselves and secretly learned to read and write in the flickering light of candles at night.

Pandita Ramabai, a great scholar of Sanskrit, felt that Hinduism was oppressive towards women, and wrote a book about the miserable lives of upper caste Hindu women. She founded a widows' home at Poona to provide shelter to widows and were given training so that they could support themselves.

From the early twentieth century, they formed political pressure groups to push through laws for female suffrage and better health care and education for women. Some of them joined various kinds of nationalist and socialist movements from the 1920s.

1. What was Pandita Ramabai's contribution towards the lives of widows? **[1]**
2. What do you understand by the term 'female suffrage' ? **[1]**
3. Why were the girls denied the opportunity to attend school in mid nineteenth century? **[2]**

CIVICS

I. Choose the correct option :

[1x5=5]

1. What does it mean to say that a state is "sovereign"?
 - A. Sovereignty is a ruse of global capitalism.
 - B. The state is recognized as the sole political authority in its territory.
 - C. Sovereignty means that you are governed indirectly by an empire but you get to keep your own, semi-autonomous institutions.
 - D. None of the above
2. The term "coercion" means
 - A. Force used by legal authority like the State
 - B. State's efforts to influence a particular matter in accordance with the principles of the Constitution
 - C. A goal or a principle
 - D. An organized political structure
3. Situations in which there are no easy solutions to problems are called _____ situations.
 - A. resolved
 - B. unresolved
 - C. approval
 - D. mobilised
4. _____ is a locality which is populated largely by members of a particular community.
 - A. Ghetto
 - B. Adivasis
 - C. Minorities
 - D. None of these

5. Which gas has been leaked from UC plant in Bhopal gas tragedy ?

- A. Nitrogen oxide
- B. Methyl-isocyanite
- C. Carbon dioxide
- D. Carbon monooxide

I. Answer the following questions in short. [2x2=4]

1. What do you understand by the term 'rule of law'. Also include a fictitious example of a violation of the rule of law. (1+1=2)
2. Discuss the significance of Public Interest Litigation (PIL) in ensuring justice to all.

II. Answer the following questions in detail. [3x2=6]

1. "An independent judiciary is necessary for Upholding the law and Enforcing the Fundamental Rights". Elucidate.
2. Which term is used for Adivasis in official documents? Discuss the importance of forests for Adivasis. (1+2=3)

III. Answer in detail. [5]

What did Rathnam refuse and why? What were the consequences he had to face after his refusal? (2+1+2=5)

OR

What are the clauses of the Scheduled Castes and the Scheduled Tribes (Prevention of Atrocities) Act, 1989 ? (2+1+2=5)

IV. Read the given passage carefully and answer the following questions: [4]

What is a worker's worth

The foreign companies come to India for cheap labour. Wages that companies pay to workers, say in U.S.A., are far higher than what they have to pay to workers in poorer/developing countries. For lower pay, companies get longer hours of work. Additional expenses such as for housing facilities for workers are also fewer. Thus, companies can save costs and earn higher profits.

Cost cutting can also be done by other more dangerous means. Lower working conditions including lower safety measures are used as ways of cutting costs. In the UC plant, every safety device was malfunctioning or was in short supply. Between 1980 and 1984, the work crew for the MIC plant was cut in half from 12 to 6 workers. The period of safety training for workers was brought down from 6 months to 15 days. The post of night-shift worker for the MIC plant was abolished.

At West Virginia(U.S.A), computerized warning and monitoring systems were in place, whereas the UC plant in Bhopal relied on manual gauges and the human senses to detect gas leaks. At the West Virginia plant, emergency evacuation plans were in place, but nonexistent in Bhopal.

1. Compare the safety standards of UC plant followed in U.S.A. and that of India. ? [1]
2. "There are many labours/workers in poorer countries who are ready to work in unsafe conditions". Why? [1]
3. Why do foreign companies want to establish their units in developing countries ? [2]

GEOGRAPHY

I. Choose the correct option:

[1x5=5]

1. The application of latest knowledge and skills in doing or making things is known as
 - A. Patent
 - B. Utility
 - C. Value
 - D. Technology

2. Which one among the following is **true**?
 - A. Water is not precious and we should not bother about its wasteful use.
 - B. All sources and substances have the equal economic value.
 - C. We should minimise the depletion of natural resources.
 - D. Non-renewable resources are human made resources.

3. Fill in the blanks :

Crop	Climatic conditions
i. ? -----	It requires high temperature, light rainfall, two hundred and ten frost-free days and bright sunshine for its growth.
ii. ? -----	It requires moderate temperature and rainfall during growing season and bright sunshine at the time of harvest.

OPTIONS:

- A. i. Wheat , ii. Maize
 - B. i. Cotton , ii. Wheat
 - C. i. Rice , ii. Coffee
 - D. i. Jute , ii. Tea
-
4. In which year the Ministry of Human Resource Development was established by the Government of India?
 - A. 1955
 - B. 1965
 - C. 1975
 - D. 1985

 5. Match the columns and choose the correct option :

Column I	Column II
a. Immigration	i. A graphical presentation of the age, sex composition of a population.
b. Emigration	ii. It is the number of years that an average person can expect to live.
c. Life expectancy	iii. When a person leaves a country.
d. Population Pyramid	iv. When a person enters a new country.

OPTIONS:

- A. a.-iv, b.-i, c.-iii, d.-ii
- B. a.-iv, b.-ii, c.-i, d.-iii
- C. a.-iv, b.-iii, c.-i, d.-ii
- D. a.-iv, b.-iii, c.-ii, d.-i

II. Answer the following questions in short :

[3x2=6]

1. Distinguish between Subsistence farming and Commercial farming. Write three points of each.

OR

Which crop is also known as the 'Golden Fibre'? Write climatic conditions required for its growth. **(1+2=3)**

2. Describe any three factors affecting the distribution of population.

III. Answer the following questions in detail :

[5x2=10]

1. How is vegetation useful to us? Explain any five points.
2. Explain any five measures to reduce the risk of industrial disaster.

OR

Explain any five favourable locational factors which were responsible for the development of the cotton textile industry in Ahmedabad.

IV. Read the given extract and answer the following questions :

[4]

A naturally occurring substance that has a definite chemical composition is a mineral. Minerals are not evenly distributed over space. They are concentrated in a particular area or rock formations. Some minerals are found in areas which are not easily accessible such as the Arctic ocean bed and Antarctica.

Minerals occur in different types of rocks. Some are found in igneous rocks, some in metamorphic rocks while others occur in sedimentary rocks. Generally, metallic minerals are found in igneous and metamorphic rock formations that form large plateaus. Iron-ore in north Sweden, copper and nickel deposits in Ontario, Canada, iron, nickel, chromites and platinum in South Africa are examples of minerals found in igneous and metamorphic rocks. Sedimentary rock formations of plains and young fold mountains contain non-metallic minerals like limestone. Limestone deposits of Caucasus region of France, manganese deposits of Georgia and Ukraine and phosphate beds of Algeria are some examples. Mineral fuels such as coal and petroleum are also found in the sedimentary strata.

IV.1 In which rocks metallic minerals are generally found? **[1]**

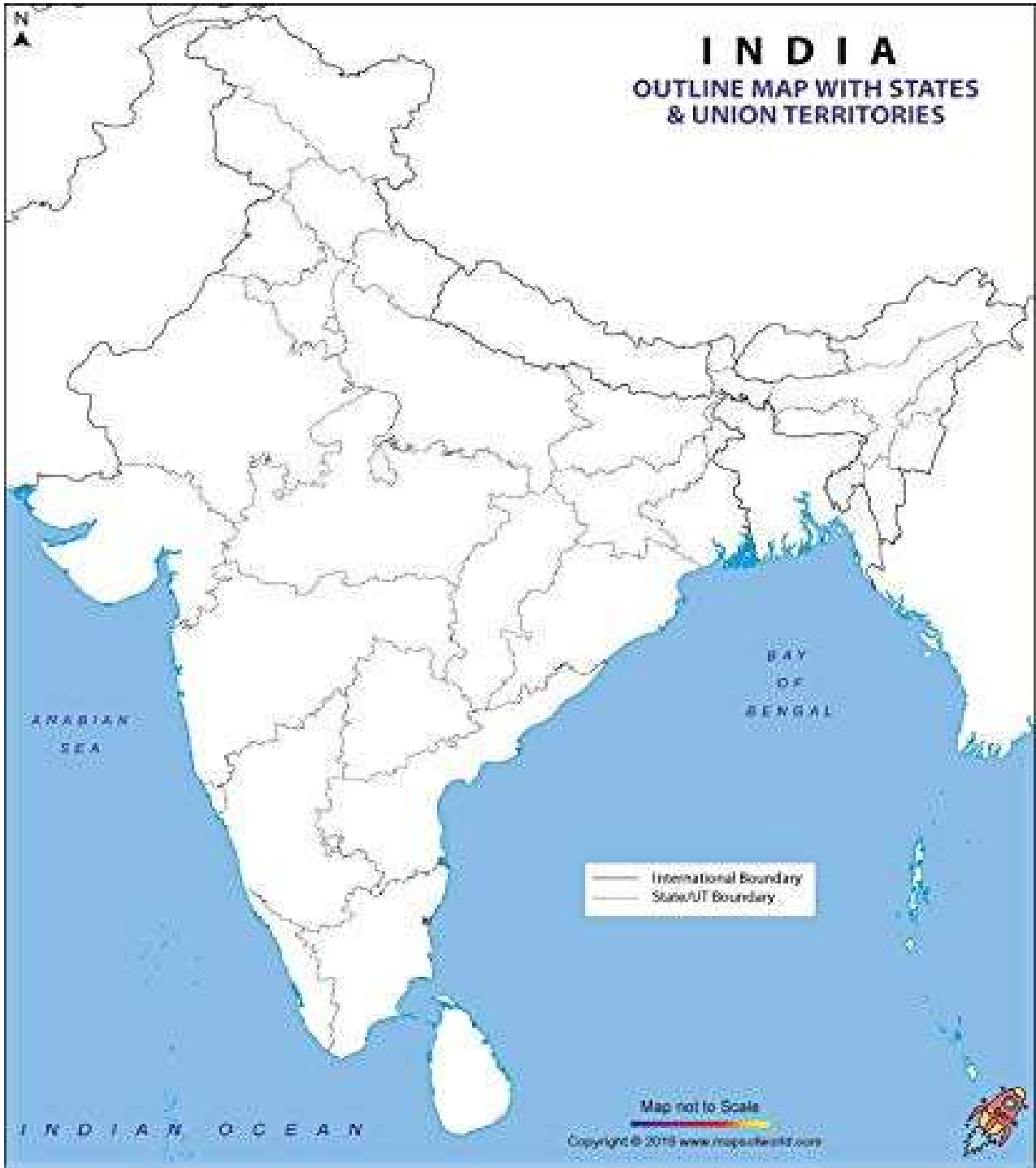
IV.2 Which country is the largest producer of high grade iron-ore in the world? **[1]**

IV.3 Why do we need to conserve minerals? **[2]**

V. Locate and label the following on the Political Map of India:

[1x3=3]

- A. Salem - Iron and Steel Plant
 - B. Jamshedpur - Iron and Steel Plant
 - C. Surat - Cotton Textile Industry
-



5. Differentiate between:

[2x2=4]

- a. Hacking and Ethical Hacking
- b. Healing Tool and Clone Tool

6. Write short notes:

[2x4=8]

- a. Artificial Neural Network
- b. Red eye removal
- c. Slide Transition
- d. Plagiarism

7. Convert the given decimal number into their equivalent binary number:

[2]

- a. 13

8. Answer the following questions:

[2x7=14]

- a. Describe about 'Computer Ethics'.
- b. What is Number System?
- c. Define Layers.
- d. Explain the 4V's of Big Data.
- e. What is Image Editing? Name four Image Editing softwares.
- f. Explain 'Cyber Bullying' with the help of an example.

“OR”

Discuss the term 'Data Science'.

- g. Write about the features of A.I.

9. Convert the given hexadecimal number into their equivalent decimal number:

[2]

- a. FF

10. Short Answer Questions:

[1x2=2]

- a. One example of A.I. in smart assistance:
- b. The keyboard shortcut option to save a file with a new name is:



DELHI PUBLIC SCHOOL

SAIL TOWNSHIP, RANCHI
ANNUAL EXAMINATION (2022-23)

Class - VIII
Time - 1 Hour

Subject - General Knowledge
Maximum Marks - 50

1. Which bamboo eating bear has a baby that may weigh less than an apple?
 - a) Alligators
 - b) Polar bears
 - c) Giant panda
 - d) None
2. Which bird can fly straight up , down and backward?
 - a) Pigeon
 - b) Hummingbird
 - c) Eagle
 - d) None
3. Which animal is known for standing on one leg for long durations?
 - a) Flamingo
 - b) Sloth
 - c) Lemur
 - d) None
4. What is the name of India's first indigenously designed super computer?
 - a) Kalki
 - b) Pushpaka
 - c) Param
 - d) All the above
5. The is a bowed, two stringed Chinese vertical fiddle.
 - a) Erhu
 - b) Balalaika
 - c) Ektara
 - d) None
6. are massive predatory birds having the largest wingspan of around 3m .
 - a) Andean condors
 - b) Golden eagle
 - c) Lappet vulture
 - d) Lammergeir

7. Who is a semi- humanoid robot that adjust its behaviour based on the moods of the people around it?
- a) Pepper
 - b) Chitti
 - c) Sonny
 - d) None
8. Which company introduced instant colour film in 1963?
- a) Polaroid
 - b) Kodak
 - c) Silver
 - d) fisheye lens
9. Who discovered the vaccine for yellow fever?
- a) Jaime Ferran
 - b) Max Theiler
 - c) John MacLeod
 - d) Alexander Fleming
10. is a handheld wireless electronic device developed for reading newspapers or any written material.
- a) Kindle
 - b) Skype
 - c) YouTube
 - d) Bluetooth
11. So far, Indians have received number of Nobel Prizes.
- a) 9
 - b) 6
 - c) 7
 - d) None
12. Which option is not the right option?
- a) Buying energy-efficient products
 - b) leasing fans,geysers, air conditioners
 - c) Replacing regular bulbs with LED
 - d) All the above
13. Which option will help in reducing global warming?
- a) Putting generators
 - b) Using inventors
 - c) Powering our homes with renewable energy
 - d) None

14. Which one of the following is not a green house gas?
- a) Oxygen
 - b) Carbon dioxide
 - c) Methane
 - d) None
15. Risinglevels,..... flooding.
- a) Glacier,Snow
 - b) Sea, Coast
 - c) Coal, Ocean
 - d) None of the following
16. Sending inappropriate content that is distressing.
- a) Phishing
 - b) illegal content
 - c) Cyber content
 - d) Social content
17. Using social media to intimidate a user and instill fear.
- a) Cyber bullying
 - b) Cyber stalking
 - c) Phising
 - d) None of the following
18. Using fake email messages to trick users into changing their password.
- a) Phishing
 - b) illegal
 - c) Scams
 - d) Grooming
19. They are small, round, rocky bodies, like normal planets but smaller in size.
- a) Dwarf planets
 - b) Nebulas
 - c) Comets
 - d) Voids
20. They are vast spaces in the universe which contain very few or no galaxies.
- a) Voids
 - b) Nebulas
 - c) Satellite
 - d) Binary stars
21. It kicks with its three toed feet.
- a) Emu
 - b) Ostrich
 - c) Falwn
 - d) All the above

22. It feeds on carcasses..
- a) Pitohui
 - b) Vulture
 - c) Falcon
 - d) None
23. It's feathers contain dangerous levels of poison.
- a) Pitohui
 - b) Vulture
 - c) Falcon
 - d) None
24. Tick the name of the country Tanzania belongs to ..
- a) Sana and Aden
 - b) Amsterdam
 - c) Tbilisi
 - d) La Paz
25. Name the city of the country chile?
- a) Santiago
 - b) Aden
 - c) Kuala
 - d) Kutaisi
26. Mark the name of the mobile wallet with their developer of yono.
- a) SBI
 - b) ICICI
 - c) Google
 - d) HDFC
27. Who is the Supreme Commander of the Indian Armed forces?
- a) The President of India
 - b) The Prime Minister
 - c) The Governor
 - d) None
28. Who manages the Indian armed forces?
- a) The MOD of the Government of India
 - b) The President
 - c) The Prime Minister
 - d) None
29. NML,KJI,HGF,....
- a) DCB
 - b) QPO
 - c) EDC
 - d) CBA

30. The UK has hosted the Summer Paralympic Games twice. Can you name the other country which has hosted the summer games twice?
- a) USA
 - b) Canada
 - c) London
 - d) None
31. Full form of MICR code?
- a) Magnetic ink character recognition code
 - b) Magnetic ink cordial character relationship
 - c) My ink colonial relation
 - d) None
32. He got the prize in Economic sciences for his Experimental approach to allievating global poverty.
- a) Har Gobind khorana
 - b) Abhijit Banerjee
 - c) Amarty Sen
 - d) None
33. The Non-Vegan food item for maple syrup,coconut nectar is..
- a) Cheese
 - b) Honey
 - c) Cream
 - d) All the above
34. Firm tofu is used as a substitute in ..
- a) cheese
 - b) curd
 - c) Paneer
 - d) None
35. Who was the honorable chief guest of DPS Ranchi on the Sports day?
- a) Shri Shunglu
 - b) Mr.Bachaan
 - c) Shri VK Rao
 - d) Shri SL Sindhu
36. Nelson Mandela was awarded the Nobel peace prize in 1993.
- a) True
 - b) False
 - c) Can't say
 - d) None
37. Which planet has the most Volcanoes?
- a) Mars
 - b) Neptune
 - c) Venus
 - d) None

38. How many moons does Jupiter have?
- a) 38
 - b) 66
 - c) 22
 - d) 1
39. Find the meaning of be the leader taking decisions.
- a) Drop the ball
 - b) Call the shots
 - c) Hit below
 - d) All the above
40. When you don't understand anything means:-
- a) It's all Greek to me
 - b) Hit below
 - c) Slow boat
 - d) None
41. Which is the largest city in Nagaland?
- a) Kohima
 - b) Dimapur
 - c) Phek
 - d) None
42. Which state of the North east has the Keibul Lamjao National park?
- a) Mizoram
 - b) Nagaland
 - c) Manipur
 - d) None of the following
43. Name the author of this book-The inheritance of loss:-
- a) Ruskin bond
 - b) V.S.Napul
 - c) Kiran Desai
 - d) Vikram Seth
44. The Rajput ruler Prithviraj Chauhan defeated Muhammad of Ghur in the:-
- a) Second battle of tarain
 - b) Battle of Chausa
 - c) Battle of Buxar
 - d) Battle of Waterloo
45. Louis Pasteur belongs to which country-
- a) Spain
 - b) France
 - c) Scotland
 - d) India

46. Tick the correct spelling:-
- a) Cemetery
 - b) Cemetary
 - c) Cementary
 - d) Cementarye
47. Put a right mark in the correct spelling:-
- a) Guarantee
 - b) Guarrantee
 - c) Guarantea
 - d) None
48. In the word NUMBER is coded as PXQGKY,how would you code the word SERIAL?
- a) UHVNGS
 - b) UVHGNS
 - c) UGNSVH
 - d) None
49. Solve the analogy question of ..
- Car:Garage :: Aeroplane:?
- a) Hangar
 - b) Harbour
 - c) Depot
 - d) None
50. Complete the letter series:-
- ZXV ,FDB ,LJH ,RPN , ?
- a) TRP
 - b) LXU
 - c) WXV
 - d) None



DELHI PUBLIC SCHOOL
SAIL TOWNSHIP, RANCHI
ANNUAL EXAMINATION (2022-23)

Class - VIII
Time - 1 Hour

Subject - Health and Physical Education
Maximum Marks- 50

General Instructions

1. The question paper consist of 50 multiple choice questions.
 2. All questions are compulsory.
 3. All questions carrying one mark (1X50 = 50)
-

1. What is the radius of centre circle in Basketball ?
 - (a) 1.80m
 - (b) 1.90m
 - (c) 1.70m
 - (d) 1.60m
2. Horse riding is the best exercise for treating which deformity?
 - (a) Knock knee
 - (b) Bow leg
 - (c) Flat foot
 - (d) All of the above
3. Which of the following deformities is also called as 'S' shape.
 - (a) Kyphosis
 - (b) Lordosis
 - (c) Scoliosis
 - (d) Flat foot
4. What are the measurements of Basketball Court ?
 - (a) 26m x 14m
 - (b) 28m x 15m
 - (c) 27m x 16m
 - (d) 28m x 13m
5. Ability to do movements with greater distance with external help is called as:-
 - (a) Active flexibility
 - (b) Dynamic flexibility
 - (c) Passive flexibility
 - (d) Static flexibility
6. Which nation will host the 2026 FIFA World Cup?
 - (a) Abu Dhabi, dubai Dubai
 - (b) France and Germany
 - (c) USA, Canada, and Maxico
 - (d) India, Pakistan and Nepal

7. 'Dunk Shot' is related to which game ?
- (a) Football
 - (b) Basketball
 - (c) Handball
 - (d) Throw Ball
8. Dhanurasana is used for curing which of the following deformities?
- (a) Scoliosis
 - (b) Kyphosis
 - (c) Flat foot
 - (d) Lordosis
9.is the range of movements of joints. In other words, it means the range of motion available in joints.
- (a) Co-ordinative
 - (b) Flexibility
 - (c) Strength
 - (d) Speed
10. In which type of tournament a team once defeated gets eliminated for the tournament?
- (a) League tournament
 - (b) Knock out tournament
 - (c) Challenge tournament
 - (d) Round robin tournament
11. How does the Game begin in Basketball ?
- (a) Passing the ball
 - (b) Jump ball
 - (c) Drop the ball
 - (d) All the above.
12. Which of the following is not a spinal curvature deformities ?
- (a) Kyphosis
 - (b) Lordosis
 - (c) Scoliosis
 - (d) Flat foot
13. _____ is the ability of muscle or body to get overcome resistance under the condition of fatigue:
- (a) Endurance
 - (b) Speed
 - (c) Stamina
 - (d) None of the above
14. There are.....Types of league tournaments
- (a) 3
 - (b) 2
 - (c) 5
 - (d) 1

15. Who won the women's under 19 T 20 Cricket World Cup 2023 ?
(a) England
(b) India
(c) Australia
(d) Newzealand
16. What is the weight of the Basketball?
(a) 430gm - 470gm
(b) 500gm - 600gm
(c) 550gm - 600gm
(d) 600gm - 650gm
17. Walking on heels is the best remedy of which deformity ?
(a) Bow leg
(b) Flat foot
(c) Knock knee
(d) None of these
18. In the fixture, which team gets the first bye?
(a) The first team of upper half
(b) The last team of lower half
(c) The first team of lower half
(d) The last team of upper half
19. What is the duration of substitution in Basketball ?
(a) 30sec
(b) 35sec
(c) 20sec
(d) 25sec
20. In bow leg there is _____
(a) Wide gap between the legs
(b) Plain foot scale
(c) Knee colliding with each other
(d) Bothe legs curving inwards
21. A successful training program is consists of _____
(a) Goals
(b) Plan work
(c) Maintain year - round fitness
(d) All of the above
22. Who invented the Game of Basketball?
(a) Dr. James Naismith
(b) Konard kotch
(c) William G. Morgan
(d) None of the above
23. Ability to react immediately and accurately to undermined or unexpected singles is known as :-
(a) Orientation ability
(b) Rhythm ability
(c) Balance ability
(d) Simple reaction ability

24. Who is the Captain of Indian Women T20 cricket team :-
(a) Bhawna Gupta
(b) Smriti Mandhrna
(c) Harmanpreet Kaur
(d) Mithali Raj
25. Explosive strength is the combination of -----
(a) Flexibility and speed
(b) Speed and strength
(c) Endurance and speed
(d) None of these
26. Who won the Golden Boot in FIFA World Cup 2022 ?
(a) Lionel Messi
(b) Kylian Mbappe
(c) Cristiano Ronaldo
(d) Luka Modri
27. How many officials are there in Basketball ?
(a) 3
(b) 5
(c) 4
(d) 6
28. FIFA is the global regulatory body of which sports ?
(a) Hockey
(b) Cricket
(c) Football
(d) Tennis
29. One of the principles of sports training is
(a) Continuity
(b) Fitness
(c) Wellness
(d) Above all
30. Which Indian cricketer scored double century in ODI vs Newzealand ?
(a) Sachin Tendulkar
(b) Shubman Gill
(c) Hardik Pandya
(d) Rohit Sharma
31. What is the circumference of the Basketball ?
(a) 65cm - 70cm
(b) 55cm - 65cm
(c) 70cm - 75cm
(d) 75cm - 78cm
32. What is the name of postural deformity caused due to increase in the forward curve at the lumber region?
(a) Knock knee
(b) Scoliosis
(c) Lordosis
(d) Bow leg

33. What is the height of the board from the ground in Basketball ?
- (a) 2.75m
 - (b) 2.85m
 - (c) 2.90m
 - (d) 2.95m
34. In sports training limbering down is done.....
- (a) Before competition
 - (b) After competition
 - (c) During competition
 - (d) None of the above
35. League tournament is also known as.....
- (a) Knock out
 - (b) Combination
 - (c) Round robin
 - (d) Consolation
36. The ability to move from one place to another in shortest period of time :
- (a) Power
 - (b) Ability
 - (c) Speed
 - (d) Balance
37. Which state organised mens Hockey World Cup tournament 2023 ?
- (a) Jharkhand
 - (b) Punjab
 - (c) Odisha
 - (d) Uttar Pradesh
38. In single knockout tournament how many byes needed to be given if 9 teams are participating
- (a) 8
 - (b) 5
 - (c) 7
 - (d) 9
39. How many arch are present in the foot of human being?
- (a) 4
 - (b) 1
 - (c) 3
 - (d) None of the above
40. What are the main advantage of knock out tournament?
- (a) It enhances the standard of sports
 - (b) Less number of officials are needed
 - (c) The tournament finishes in short period of time
 - (d) All the above
41. The official Mascot is of FIFA world cup 2022 at Qatar was :
- (a) La'eeb
 - (b) Perry
 - (c) Goldic
 - (d) Kenyo

42. Which country has won maximum times world cup in football ?
(a) Brazil
(b) Italy
(c) Germany
(d) USA
43. Who won the men's Hockey World Cup 2023 ?
(a) Germany
(b) Belgium
(c) Netherland
(d) Australia
44. The ability to combine the movements of different body parts for performing perfect sports movements.....
(a) Orientation ability
(b) Coupling ability
(c) Balance ability
(d) None of the above
45. There are.....Types of tournament
(a) 3
(b) 2
(c) 4
(d) 6
46. Who won the Golden Ball in FIFA world cup 2022?
(a) Kylian Mapped
(b) Cristiano Rolando
(c) Lionel Messi
(d) Robert Lewandowski
47. The total number of officials for a Football match is _____
(a) 4
(b) 5
(c) 6
(d) 3
48. Who is the captain of Indian Basketball Men's Team?
(a) Vishesh Bhriguvanshi
(b) Vivek Goti
(c) Prashant Singh Rawat
(d) None of the above
49. Flat Foot and Round Shoulder are deformities associated with _____
(a) Skeletal System
(b) Reproductive System
(c) Respiratory System
(d) Nervous System
50. Which of the following is not a movement speed:
(a) Boxing
(b) Wrestling
(c) Karate
(d) Yoga



DELHI PUBLIC SCHOOL

SAIL TOWNSHIP, RANCHI

ANNUAL EXAMINATION (2022-23)

Class - VIII
Time - 90 Minutes

Subject - French
Maximum Marks - 40

Unseen passage

1. Lisez le texte et répondez aux questions.

La Toussaint est une fête catholique, en l'honneur de tous les saints du panthéon catholique, et non une fête chrétienne. Au VII^e siècle, l'église catholique fait du Panthéon de Rome une église dédiée à Sainte-Marie des martyrs. Ainsi, au culte des divinités romaines se substitue le culte des saints catholiques.

C'est à cette occasion que la fête de la Toussaint est instituée. A l'origine, elle est célébrée en mai. On l'a ensuite déplacée au 1^{er} novembre. La Toussaint, c'est la fête des saints et non la fête des morts. Celle-ci a lieu le 2 novembre. Cependant, parce que la Toussaint est un jour férié, il est plus facile de se rendre au cimetière ce jour-là !

1. Répondez: [3]

- 1) À quelle religion est associée la Toussaint.
- 2) Pourquoi fête-t-on la fête des morts le 1^{er} novembre?
- 3) À l'origine, quand fêtait-on la Toussaint ?

2. Trouvez dans la texte: [2]

- a) Deux religions -
- b) Deux adjectif -
- c) Un verbe pronominal -
- d) Deux verbe

Writing

1. Écrivez une lettre à votre ami(e) en décrivant votre fête préférée. (50 Mots) [5]

Où

Décrivez cette image. (les enfants, fille, garçon, content, étudier, s'amuser) [5]



Grammer

1. Mettez les phrases au passé composé. [5]
- 1) Ils écrivent un livre.
 - 2) Juliette regarde un film.
 - 3) Est-ce que Pierre finit à 16 heures ?
 - 4) Je ferme la fenêtre.
 - 5) Tu lis le roman ?
2. Mettez les phrases au futur proche. [2.5]
- 1) Mon père va au bureau en voiture.
 - 2) Nous allons au cinéma ce dimanche.
 - 3) Je préfère la robe noire.
 - 4) J'achète trois stylos.
 - 5) Tu lis le journal.
3. Mettez les phrases au futur simple: [5]
- 1) Tu fais du travail.
 - 2) Il aime voyager.
 - 3) Elles font leurs devoirs.
 - 4) Il ne pleut pas en inde.
 - 5) Vous aimez la musique jazz.
4. Changez au forme négatif : [5]
- 1) Tu es gentil avec elle.
 - 2) Tu vas dans ta chambre.
 - 3) Il travaillr beaucoup.
 - 4) Je mange dans la cantine.
 - 5) Nous jouons au tennis.
5. Transformez les adjectifs en adverbe : [2.5]
- 1) Doux -
 - 2) Vrai -
 - 3) Fréquent -
 - 4) Gentil -
 - 5) Poli -
6. Completez par conjonctions : [5]
- 1) Je n'aime pas nager.j'aime marcher.
 - 2) Je mange des fruits.c'est bon pour la santé.
 - 3) Je suis malade.je ne vais pas travailler demain.
 - 4) Il pleut.Il restent à la maison
 - 5) Je dois travailler.je n'ai pas envie.

Culture and civilization

1. Répondez aux questions :

[5]

- 1) Nommez deux montagne français.
 - 2) Que français mange en petit- déjeuner.
 - 3) Que français mange en dîner.
 - 4) Quest-ce que la basilique de fourvière.
 - 5) Écrivez en français :
 - a) City -
 - b) School -
 - c) Office -
-



DELHI PUBLIC SCHOOL

SAIL TOWNSHIP, RANCHI

ANNUAL EXAMINATION (2022-23)

Class - VIII
Time - 90 Mintues

Subject - German
Maximum Marks- 40

1. Liest den Text:

Es ist August gewesen, der dritte August. Ich habe seit Ende des Semesters als Kellner in einer Kneipe schwer gearbeitet. Ich habe mir gedacht: Mensch, du brauchst ein bisschen Freizeit, bevor das Semester wieder anfängt. Aber was willst du machen? Willst du etwas Neues sehen? Du musst dich ausruhen und ausschlafen. Dann habe ich beschlossen, nach Griechenland zu fahren, und am fünften August bin ich mit dem Zug nach Griechenland gereist. Die Reise hat lange gedauert -- etwa 35 Stunden.

Ich habe zuerst Athen besucht -- die Akropolis, das Nationalmuseum, den Tempel des Olympischen Zeus. Eines Abends habe ich in einem Restaurant in der Plaka gegessen. Da habe ich Susanne zum ersten Mal gesehen, aber ich habe sie nicht angesprochen. Später hat es mir leidgetan, dass ich das nicht getan habe. Aber so spontan sein ... das kann ich nicht.

Das Wetter in Athen ist aber herrlich gewesen. Heiß -- dreißig Grad war es und auch schwül. Jeden Tag hat die Sonne geschienen. Es hat keinen Tag geregnet.

Am nächsten Tag bin ich mit dem Schiff auf die Insel Kreta gefahren. Ich habe ein billiges Zimmer in einem Hotel gefunden und bin sofort zum Strand gelaufen. Wunderschön war der Strand -- der Sand war fast weiß und das Wasser so blau -- nee, fast grün -- und so klar wie Glas. Der Tag war herrlich -- sonnig und heiß, aber auch ein bisschen windig. Ich bin geschwommen, habe gelesen und geschlafen ... Als ich aufgewacht bin, habe ich sie gesehen. Dieselbe Frau ... die Frau vom Restaurant in Athen. Sie hat mich angestarrt. Ich habe sie angelächelt, aber ich habe nicht gewusst, was ich weiter machen sollte ... hab' also nichts getan.

Am Abend bin ich in ein kleines Restaurant in der Nähe vom Hotel gegangen. Ich habe draußen gegessen und habe ein Glas Wein getrunken. Plötzlich habe ich sie gesehen. Sie ist an meinem Tisch vorbeigegangen. Ich habe »Hallo« gesagt und sie zu einem Glas Wein eingeladen. Sie hat ja gesagt. Wir haben lange am Tisch gegessen und haben über alles Mögliche diskutiert. Dann sind wir am Strand spazieren gegangen. Tja, so hat es angefangen. Von da an sind wir die ganze Zeit zusammen gewesen.

	<p>A. Schreib in richtigerfolge: (put these sentences into the correct order of what happened and when in the story.)</p> <p>a. _____ Der Mann sieht Susanne in einem Restaurant. b. _____ Der Mann arbeitet in einer Kneipe. c. _____ Der Mann redet eine lange Zeit mit Susanne. d. _____ Der Mann besucht alle Sehenswürdigkeiten in Athen. e. _____ Der Mann fährt nach Griechenland. f. _____ Der Mann fährt nach Kreta. g. _____ Der Mann sieht Susanne aber er spricht sie nicht an. h. _____ Der Mann geht zum Strand.</p> <p>B. Schreib die Text nochmal in Schönen Handschrift</p>	<p>1x8=8</p> <p>2</p>
<p>2.</p>	<p>Du bekommst eine Mail von Stefan.</p> <p>Liebe Tina, Wie geht's? Meine Schulferien sind zu Ende. Morgen beginnt die Schule. Ich fahre mit dem Fahrrad zur Schule. Meine Schule ist nicht so weit. Es ist ungefähr 3 Kilometer von meinem Haus und ich brauche nur fünfzehn Minuten. Viele Freunde von mir kommen auch mit dem Linienbus oder mit der Bahn. Schulbusse gibt es vor allem auf dem Land. Mein Freund Ben hat Glück. Er wohnt in der Nähe der Schule und kann zu Fuß zur Schule kommen. Wie gehst du zur Schule? Zu Fuß, mit dem Fahrrad, mit dem Linienbus oder habt ihr auch Schulbusse? Schreib mir bald!</p> <p>Viele Grüße Max</p> <p>Lies die Mail und Antwort die Fragen in 40 Wörter.</p> <ul style="list-style-type: none"> • Wie weit ist deine Schule? • Wie lange brauchst du zur Schule? • Geht man viel zu Fuß in deinem Land? 	<p>5</p>
<p>3.</p>	<p>Stell fragen:</p> <p>a. _____? - Nein, du darfst nicht.</p> <p>b. _____? - Ich habe jeden Tag gebadet.</p> <p>c. _____? - Er sitzt vor den Fernseher.</p> <p>d. _____? - Nein, ich habe keine Lust.</p> <p>e. _____? - Die hänge in den Kleiderschrank.</p>	<p>1x5=5</p>

4.	Bau die Sätze vor: a. dem Jungen .Rad .gehört .das . b. Figur .der .Essen . zu viel .schadet . c. Den .Muskeln .hilft .Radfahren . d. hat .Lust .Lydia .keine . mehr. e. ist .nicht .leicht .wirklich .das .	1x5=5														
5.	Schreib Sätze mit diesen Wörtern Si fahren surfen Schwimmen Radfahren fernsehen	1x5=5														
6.	Der oder dem? Ergänze: 1. Wir treffen wir uns vor _____ Kino. 2. Wir treffen wir uns in _____ Café. 3. Wir treffen wir uns vor _____ Museum. 4. Wir treffen wir uns in _____ MediaMarkt. 5. Wir treffen wir uns vor _____ Buchhandlung. 6. Wir treffen wir uns vor _____ Kirche. 7. Wir treffen wir uns in _____ Schule. 8. Wir treffen wir uns in _____ Park.	.5x8=4														
7.	Was passt zusammen? <table border="1" data-bbox="318 974 1211 1604"> <tr> <td data-bbox="318 974 764 1056">1. Wo liegt die Bank?</td> <td data-bbox="764 974 1211 1056">a. Ja, in der Goethestraße.</td> </tr> <tr> <td data-bbox="318 1056 764 1171">2. Liegt die City – Hotel vor der Post?</td> <td data-bbox="764 1056 1211 1171">b. Am Rathausplatz.</td> </tr> <tr> <td data-bbox="318 1171 764 1253">3. Gibt es hier eine Pizzeria?</td> <td data-bbox="764 1171 1211 1253">c. Neben der Sprachschule.</td> </tr> <tr> <td data-bbox="318 1253 764 1335">4. Wo ist Max?</td> <td data-bbox="764 1253 1211 1335">d. Nein, vor der Apotheke.</td> </tr> <tr> <td data-bbox="318 1335 764 1451">5. Treffen wir uns im Mediamarkt?</td> <td data-bbox="764 1335 1211 1451">e. Er sitzt im Park.</td> </tr> <tr> <td data-bbox="318 1451 764 1533">6. Wo ist das Rathaus?</td> <td data-bbox="764 1451 1211 1533">f. Nein, im Café.</td> </tr> <tr> <td data-bbox="318 1533 764 1604"></td> <td data-bbox="764 1533 1211 1604"></td> </tr> </table>	1. Wo liegt die Bank?	a. Ja, in der Goethestraße.	2. Liegt die City – Hotel vor der Post?	b. Am Rathausplatz.	3. Gibt es hier eine Pizzeria?	c. Neben der Sprachschule.	4. Wo ist Max?	d. Nein, vor der Apotheke.	5. Treffen wir uns im Mediamarkt?	e. Er sitzt im Park.	6. Wo ist das Rathaus?	f. Nein, im Café.			1x6=6
1. Wo liegt die Bank?	a. Ja, in der Goethestraße.															
2. Liegt die City – Hotel vor der Post?	b. Am Rathausplatz.															
3. Gibt es hier eine Pizzeria?	c. Neben der Sprachschule.															
4. Wo ist Max?	d. Nein, vor der Apotheke.															
5. Treffen wir uns im Mediamarkt?	e. Er sitzt im Park.															
6. Wo ist das Rathaus?	f. Nein, im Café.															



DELHI PUBLIC SCHOOL

SAIL TOWNSHIP, RANCHI

ANNUAL EXAMINATION (2022-23)

Class - VIII
Time - 90 Minutes

Subject - Japanese
Maximum Marks- 40

-
1. Write the reading of any three of the underlined Kanji characters. [3]
 - 1) わたしはインド人です。
 - 2) 木のうえにとりがいます。
 - 3) 火にちかづいたら、あぶないよ。
 - 4) ガンジス川は、とてもおおきな川です。
 - 5) 日がでているから、きょうはあたたかいですね。

 2. Write the numbers 1-10 in Kanji. [4]

OR

Write the days of the week in Japanese (Kanji & Hiragana).

 3. Complete any three sentences by using the hints given in brackets. [3]
 - 1) あさはいつも、5じ _____。 (get up)
 - 2) 8じのバスに _____。 (get on)
 - 3) がっこうには、8じはんに _____。 (arrive)
 - 4) 3じにいえに _____。 (return)
 - 5) やすみの日はともだちのいえに _____。 (go)

 4. Write the meaning of any three sentences in English. [3]
 - 1) つくえの中にほんがあります。
 - 2) 木の上にとりがいます。
 - 3) テーブルの下にゴミばこがあります。
 - 4) バイクの前に車があります。
 - 5) 本の上にペンがあります。

5. Write an essay of a minimum of five sentences on "My city" or "My school" in Japanese (Hiragana & Kanji). [4]
6. Translate any four of the following sentences in Japanese. [4]
- 1) There seems to be a bird on the tree.
 - 2) There seems to be a black car in front of the bike.
 - 3) There seem to be many people at the party.
 - 4) This chai looks tasty.
 - 5) Bullet trains seem to be convenient.
7. Write the following verbs in **ます** form, **ない** form, **て** form, and **た** form. [3]
- 1) かく
 - 2) いく
 - 3) よむ
8. Make interrogative sentences by using the following words. [3]
- 1) なん / なに
 - 2) いつ
 - 3) いくら
9. Answer the following questions in Japanese (Hiragana). [2]
- 1) いえをでるまえ、おかあさんになんといいますか？
 - 2) ともだちにあやまるとき、なんといいますか？
10. Translate any three of the following Japanese sentences into English. [3]
- 1) あたらしいくるまをかったので、こんどのせてあげます。
 - 2) ここにでんわばんごうをかいてください。
 - 3) わからないときは、せんせいにきいてみてください。
 - 4) わたしがつくったケーキをたべてほしいです。
 - 5) もしわたしがおかねもちだったら、おおきないえをかいます。
11. Rearrange the following jumbled words to make meaningful sentences. [3]
- 1) おちゃ / は / おいしいです / つめたくても / この / 。
 - 2) わたし / は / ことができます / を / とる / しゃしん / 。
 - 3) きょう / この / は / くすり / のんでください / を / 。

12. Read the following paragraph and answer the following questions in Japanese (Hiragana).

[5]

- ひらべえ： たかのさん、らいしゅうきょうとにともだちといっしょにあそびにいくのですが、おすすめのばしょはありますか？
- たかの： そうですね...ひらべえと、ひらべえのおともだちはおてらやじんじゃにきょうみがありますか？
- ひらべえ： はい、あります。
- たかの： それなら、きよみずではどうでしょうか。きょうとで人気のあるかんこうスポットの一つです。きょうとにいくなら、ぜひいってみてください。あと、きんかくじもおすすめです。
- ひらべえ： きんかくじ？おもしろいなまえのおてらですね。
- たかの： きんかくじは、きんぱくでつつまれているんですよ。ほら。きよねん行ったときにとったしゃしんです。
- ひらべえ： すごくきれいですね。ぼく、ここにいてみたいです。
- たかの： はい、きょうとえきからバスにのってかんたんに行くことができますよ。
- ひらべえ： きょうとえきからどれぐらいかかりますか？
- たかの： 40分ぐらいですかね。
- ひらべえ： わかりました！らいしゅういくのがたのしみになってきました。

- 1) ひらべはともだちとらいしゅうどこに行きますか？
- 2) ひらべえやひらべえのともだちは何にきょうみがあるといっていますか？
- あてはまるものをえらびましょう。

1. 日本のアニメ
2. おてらやじんじゃ
3. 日本のりょうり
4. 日本のドラマやおんがく

3) さんかくじは、何につつまれたおてらですか。

1. きんぱく
2. ぎん
3. かん
4. おかし

4) きょうとえきからさんかくじまでバスでどれくらいかかりますか？

5) かいわのないようにただしくないものを一つえらびましょう。

1. たかのさんは、さんかくじに行ったことがあります。
 2. ひらべえとひらべえのともだちは、らいしゅうおおさかに行きます。
 3. きょうとえきからさんかくじまで、バスで40分くらいかかります。
 4. ひらべえとひらべえのともだちはらいしゅうさんかくじに行きます。
-



DELHI PUBLIC SCHOOL

SAIL TOWNSHIP, RANCHI

ANNUAL EXAMINATION (2022-23)

Class - VIII
Time - 90 Minutes

Subject - Sanskrit
Maximum Marks- 40

खण्ड 'क'

1. अधोलिखितम् गद्यांशं पठित्वा प्रश्नानाम् उत्तराणि लिखत :-

एकस्मिन् वने तीक्ष्णनखः नाम सिंहः प्रतिवसति स्म। क्षुधार्तः एकदा सः मृगयार्थं इतस्ततः परिभ्रमन् भृशं श्रान्तः जातः। सायंकाले यदा सः कस्यचित् पशोः एकां गुहां दृष्टवान् तदा सः प्रविश्य गुहायाम् उपाविशत् तत्र निलीय निषीदन् सिंहः अचिन्तयत् यत् अस्याः गुहायाः वास्तव्यः पशुः यदा अन्तः आयाति तदैव अहं तं आक्रम्य हनिष्यामि। इत्थं मम भोजनस्य व्यवस्था च भविष्यति।

(क) एकपदेन उत्तरत :- (1/2x2=1)

(i) एकस्मिन् वने कः प्रतिवसति स्म? (ii) सः किमर्थं इतस्ततः परिभ्रमन्?

(ख) एकवाक्येन उत्तरत :- (1x2=2)

(i) सः सिंहः गुहां कदा दृष्टवान्? (ii) सिंहः किम् अचिन्तयत्?

(ग) उचितं विकल्पं चिनुत :- (1/2x2=1)

(i) 'गुहां' अत्र का विभक्ति प्रयुक्ता?

(अ) प्रथमा (ब) द्वितीया (स) तृतीया (द) चतुर्थी

(ii) 'मारयिष्यामि' इति क्रियापदस्य कः अन्यः पर्यायः अत्र प्रयुक्तः?

(अ) भविष्यति (ब) प्रतिवसति (स) हनिष्यामि (द) आयाति

2. अधोलिखितम् पद्यांशं पठित्वा प्रश्नानाम् उत्तराणि लिखत :-

अस्त्युत्तरस्यां दिशि देवतात्मा हिमालयो नाम नगाधिराजः।
पूर्वापरौ तोयनिधी वगाह्य स्थितः पृथिव्या इव मानदण्डः।।

(क) एकपदेन उत्तरत :- (1/2x2=1)

(i) नगाधिराजः कः अस्ति? (ii) नगाधिराजः कस्यां दिशि अस्ति?

(ख) एकवाक्येन उत्तरत :- (1x2=2)

(i) हिमालयः पृथिव्यां कीदृशः इव स्थितः अस्ति? (ii) अत्र हिमालयः कस्य आत्मा अस्ति?

(ग) उचितं विकल्पं चिनुत :- (1/2x2=1)

(i) दिशि अत्र का विभक्ति प्रयुक्ता?

(अ) पंचमी (ब) षष्ठी (स) सप्तमी (द) संबोधन

(ii) 'पूर्वापरौ' अत्र किम् वचनम् प्रयुक्तम्?

(अ) एकवचनं (ब) द्विवचनं (स) बहुवचनं (द) न कोऽपि

3. मञ्जूषात् क्रियापदानि चित्वा रिक्तपदानि पूरयत :-

(1/2x4=2)

(मञ्जूषा – पिबेत्, प्रणमामि, वद, गायन्ति)

- (क) प्रातः अहं पितरौ ----- ।
 (ख) प्रतिदिनं वस्त्रपूतं जलं ----- ।
 (ग) देवाः गीतकानि ----- ।
 (घ) अनृतं मा ----- ।

4. रेखांकितपदानि आधृत्य प्रश्ननिर्माणं कुरुत :-

(1x3=3)

- (क) हिमालयः उत्तरस्यां दिशि अस्ति ।
 (ख) श्रृङ्गाणि आतपवन्ति सन्ति ।
 (ग) अन्धकारः दिवाकरात् बिभेति ।

5. अधोलिखितानां पदानां विलोमपदानि लिखत :-

(1/2x4=2)

पदानि		विलोम पदानि
(क) यदा	=	-----
(ख) दीर्घः	=	-----
(ग) नवीनः	=	-----
(घ) दूरम्	=	-----

6. मञ्जूषात् उचितपदं चित्वा रिक्तस्थानपूर्तिं कुरुत :-

(1/2x4=2)

(मञ्जूषा – अतः, पुनः, तावत्, तर्हि)

- (क) यदि परिश्रमेण पठसि ----- उत्तीर्णं भविष्यसि ।
 (ख) त्वं ----- मूषको भव ।
 (ग) यावत् त्वं न आगच्छसि ----- अहं न गमिष्यामि ।
 (घ) छात्रः ज्वरपीडितः अस्ति ----- सः गृहात् विद्यालयं न अगच्छत् ।

7. अधोलिखित – वाक्यानां संस्कृते अनुवादं कुरुत :-

(1x2=2)

- (क) वह पढ़ने के लिए स्कूल जाती है ।
 (ख) बालिका खाकर सोती है ।

8. परस्परं – मेलनं कुरुत :-

(1/2x4=2)

(क)	(ख)
(क) रात्रिर्गमिष्यति	योजयते हिताय
(ख) पापान्निवारयति	भविष्यति सुप्रभातम्
(ग) अद्यैव मरणमस्तु	गुणान् प्रकटीकरोति
(घ) गुह्यं निगूहति	युगान्तरे वा

9. निम्नलिखितपदेषु धातूनां लकारं पुरुषं च लिखत :-

(1/2x4=2)

	<u>पदानि</u>	<u>लकारः</u>	<u>पुरुषः</u>
(क)	ददाति	-----	-----
(ख)	प्रवदन्ति	-----	-----

10. निम्नलिखित – वाक्यानि लङ्लकारे परिवर्तयत :-

(1x2=2)

- (क) सः ग्रामे प्रतिवसति । = -----
(ख) अहं अध्यापकः भविष्यामि । = -----

11. अधोलिखितपदेषु धातुम् उपसर्गं च पृथक् कुरुत :-

(1/2x4=2)

	<u>पदानि</u>	<u>धातुः</u>	<u>उपसर्ग</u>
(क)	प्रवदन्ति	-----	-----
(ख)	समाचरेत्	-----	-----

12. सन्धिविच्छेदं कुरुत :-

(1/2x4=2)

- (क) अद्यैव = ----- + -----
(ख) युगान्तरे = ----- + -----

13. घटनाक्रमानुसारेण वाक्यानि लिखत :-

(1/2x6=3)

- (क) एकदा तस्य प्रासादं एकः मुनिः आगच्छत् ।
(ख) तां दृष्ट्वा राजा भृशं व्यलपत् ।
(ग) पुरा कस्मिंश्चिद्देशे एकः नृपः प्रतिवसति स्म ।
(घ) राज्ञः स्पर्शेण तस्य तनया स्वर्णप्रतिमा अभवत् ।
(ङ) तस्य नाम यशपालः आसीत् ।
(च) सः नृपाय वरम् अयच्छत् यत् तव स्पर्शेण सर्वं स्वर्णं भविष्यति ।

14. वाक्यानि शुद्धानि कुरुत :-

(1/2x2=1)

- (क) लोभेन क्रोधः प्रभवति । = -----
(ख) रामं रोचते ओदनम् । = -----

15. धातुरूप प्रयोगं कुरुत :-

(1/2x2=1)

- (क) सः जलं ----- । (पा लृट्लकारे)
(ख) त्वं चलचित्रं ----- । (दृश् लङ्लकारे)

16. उपपद विभक्ति प्रयोगं कुरुत :-

(1/2x4=2)

- (क) श्री ----- नमः । (गणेश)
(ख) रामः ----- अलम् । (रावण)
(ग) सः ----- बिभेति । (शिक्षक)
(घ) त्वं ----- बहिः गच्छसि । (गृहं)

17. शब्दरूपपरिचयं दीयताम् :-

(1/2x4=2)

	विभक्तिः	वचनं
(क) पिता	_____	_____
(ख) राजानम्	_____	_____

18. धातुरूप परिचयं दीयताम् :-

(1/2x4=2)

	लकारः	पुरुषः
(क) लभते	_____	_____
(ख) मोदिष्यसे	_____	_____



DELHI PUBLIC SCHOOL

SAIL TOWNSHIP, RANCHI

ANNUAL EXAMINATION (2022-23)

Class - VIII
Time - 90 Minutes

Subject - Spanish
Maximum Marks- 40

Write answers in complete sentences along with questions. If answered in a word, full marks will not be given.

1. Comprensión

[10]

Hola, chica. Acabo de llegar de port Aventura. ¡Fue increíble! Estuvimos casi todo el tiempo en la zona de México. Lo más guay fue El Diablo. Es un tren como los que iban antes a las minas. Tiembla y está lleno de sorpresas. Gritamos y reímos todo el tiempo! La Serpiente Emplumada, que da vueltas y vuela, también es muy emocionante. Pero no me atrevi a subir al Dragon Khan, me da un poco de vergüenza decirlo. Es la única montaña rusa del mundo que tiene ocho vueltas. ¡Si me subo, me muero allí mismo!

¿Cuándo nos vemos? Un beso, Pierre.

Contesta las preguntas sobre el texto :

- ¿Dónde está Pierre?
- ¿En qué zona del parque ha estado más tiempo?
- ¿Qué atracción es como un tren antiguo?
- ¿Qué hace la Serpiente Emplumada?
- ¿Por qué Pierre no subió al Dragón Khan?

2. Traduce las frases siguientes de inglés a español:

[5]

- My name is Raquel Pereira.
- I work in an office.
- I study Spanish and speak three languages.
- Yesterday I went to the cinema with my friends.
- My parents don't let me drive a car.

3. Llena los huecos con verbos conjugados en futuro :

[4]

- César (acabar) la secundaria dentro de tres años.
- (salir, nosotros) de casa a las siete de la tarde.
- Mañana (hacer) frío por la mañana.
- Te (querer) siempre.
- En el próximo sorteo de lotería (tener) suerte y (decir) adiós al trabajo.
- En el futuro (Ir, nosotros) de vacaciones a Marte.
- El curso que viene (hablar, vosotros) muy bien español.
- El trasatlántico (partir) del puerto el próximo jueves.

4. **Haz frases con marcadores temporales de futuro:** [2]
 a. El próximo mes -
 b. Mañana -
 c. En el futuro -
 d. Dentro de cincuenta años -
5. **Haz frases con :** [1]
 a. Está prohibido -
 b. No se puede -
6. **Completa oraciones condicionales con presente + presente/Imperativo :** [2]
 a., te regalo un bolígrafo de Pierre cardin.
 b. Si hace mucho calor, a la playa con mis amigos.
 c. Si no recuerdas los verbos, con ejercicios.
 d. Si quieres ganar buenas notas,
7. **Completa oraciones condicionales con presente + futuro :** [2]
 a. la casa fácilmente, si pones un anuncio en OLX.
 b. Si conduzco despacio,
8. **Elige la expresión correcta de también y tampoco** [2]
 a. He jugado este video juego dos veces -
 b. No nos gustan las novelas de ciencia ficción -
 c. El curso pasado estudié español -
 d. No escribí bien los párrafos de inglés -
9. **Completa con los tiempos del verbo :** [7]
 a. Este mes (comer, tú) pescado tres veces.
 b. Si (tener, tú) tos, te (sentir) mal.
 c. En 2021 (participar, vosotros) en el partido de fútbol y (ganar, vosotros) una medalla.
 d. Cuando..... (Ser, nosotros) pequeños, (ir, nosotros) todos los días al parque.
 e. ¿Qué(hacer, tú)? Ahora (leer, yo).
 f. ¿Si (encender, tú) la tele, (poder, nosotros) ir al restaurante para comer.
 g. Ayer, (ir, yo) al cine.
10. **Escribe conjugación de los verbos abajos :** [5]
 Hablar, escribir (futuro simple)
 Estudiar, aprender (Pretérito indefinido)
 Trabajar (Pretérito perfecto)